

# LAWRENCE SECONDARY SCHOOLS MASTERPLAN

USD497 board meeting | 11.28.2016

gouldevans

## GOALS FOR MIDDLE SCHOOLS

1. Create **21<sup>st</sup> century learning environments** that give students more control of their learning and creation
2. Improvements to **accommodate student privacy in locker rooms**
3. **Strategic MEP + systems upgrades** to lessen the burden on deferred maintenance and capital outlay

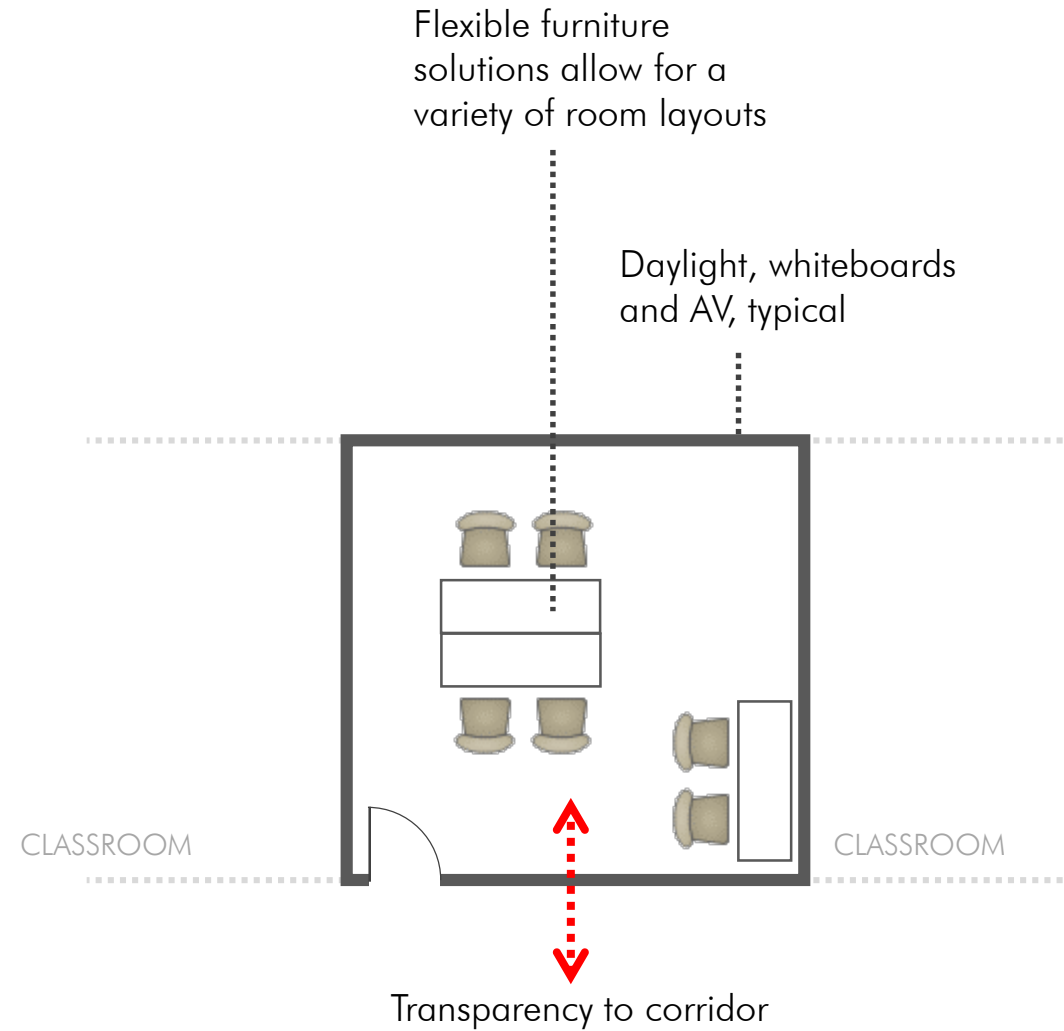
## GOALS FOR HIGH SCHOOLS

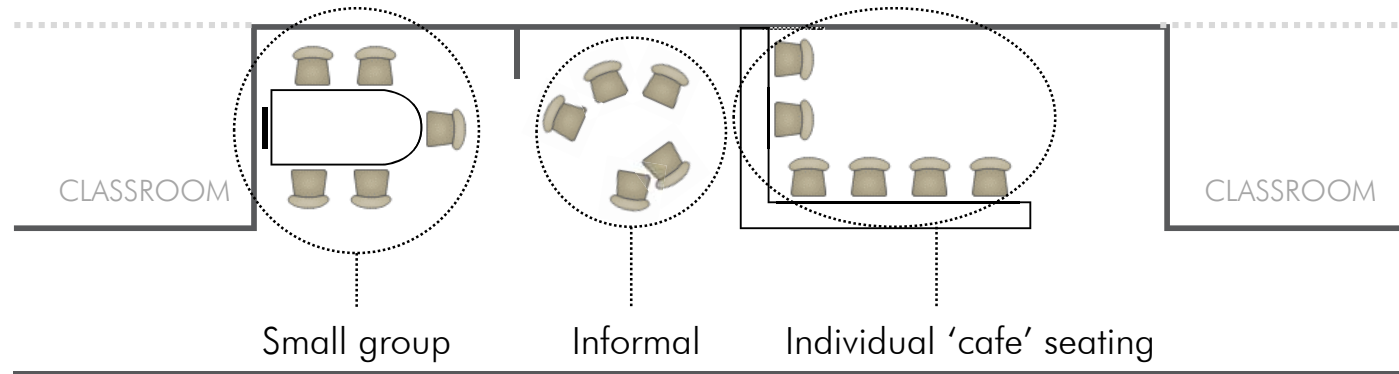
1. Create **21<sup>st</sup> century learning environments** that give students more control of their learning and creation
  2. Improvements to **accommodate student privacy in locker rooms**
  3. **Strategic MEP + systems upgrades** to lessen the burden on deferred maintenance and capital outlay
- 
4. Create a **safe and secure campus**
  5. Create **professional space for faculty** engagement and collaboration
  6. **Accommodate growth**

# BENCHMARKS



Lee's Summit West HS





Lansing HS





Terraced seating and green space for outdoor learning



Lee's Summit West HS

Opportunity for exterior dining

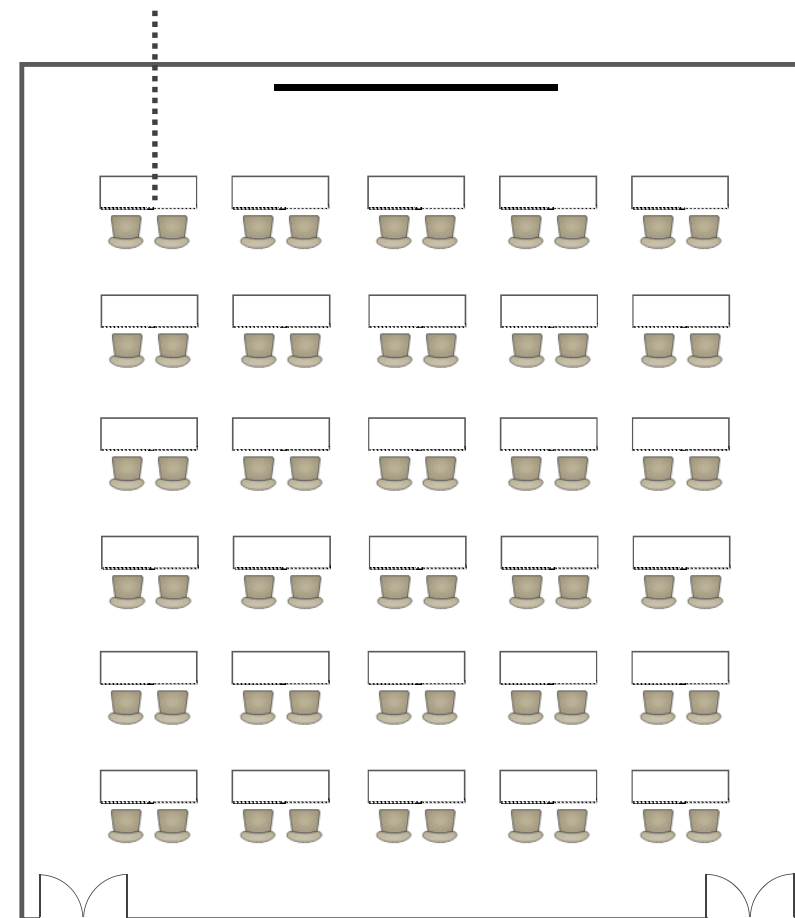


Blue Valley Southwest HS



Lee's Summit West HS

50 at table or 150 in rows



Used for student testing,  
faculty meetings, planning  
and classroom break-out





Media spaces pre 1:1  
device initiative requires  
robust computer space

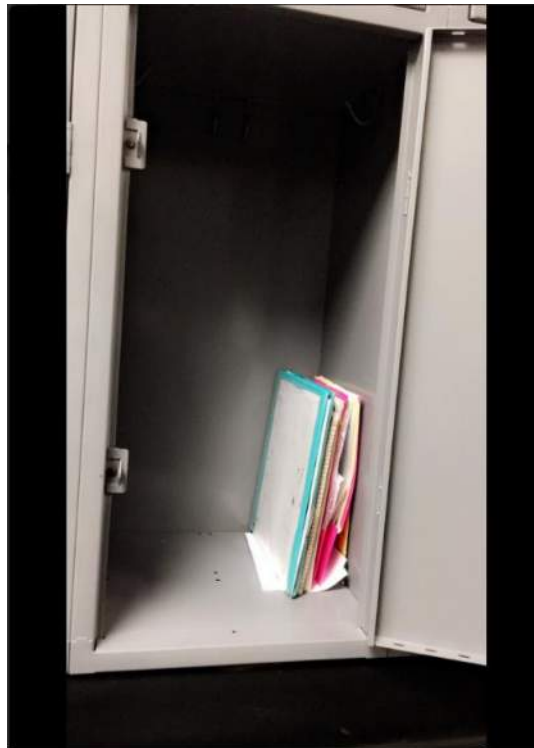
Blue Valley Southwest HS





As LHS/FSHS transition to 1:1 devices, space previously used as computer labs may be freed up for collaborative learning opportunities, in-class break-out and maker space

Lee's Summit West HS



**ShyBuck** @shybucket · May 16  
#GELHS8

30%



**Bridget Smith** @brsmith215 · May 12  
A pic of the inside of Carson's locker! #GELHS8

25%



**Sam Bart** @ch1d1shsantano · May 13  
#GELHS8

35%



10%

Nearly half of all students either did not use their locker, or were not assigned a locker

LANSING HIGH

SF	SF/STUDENT
653	21
653	21
671	22
671	22
673	22
673	22
678	22
679	22
683	22
683	22
686	22
686	22
699	23
706	23
718	23
720	23
720	23
723	24
723	24
723	24
723	24
756	24
757	24
763	25
770	25
771	25
780	25
784	25
784	25
796	26
796	26
796	26
807	26
833	27
844	27

CORE CR's  $\geq 24$  SF/PERSON

NEEDS





West Middle School



Liberty Memorial Central  
Middle School



South Middle School



Southwest Middle School

## MIDDLE SCHOOL NEEDS - 21<sup>st</sup> century learning

### All Middle Schools

- Create collaborative *Learning Pockets* along corridors, supporting in-class breakout
- Transform library/media centers into a flexible *Innovation Commons*, with support for maker space, project and product-based learning and in-class breakout

### West Middle School

- Right-size classrooms
- New HVAC system





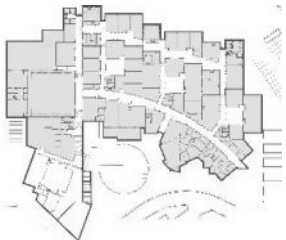
West Middle School



Liberty Memorial Central  
Middle School



South Middle School



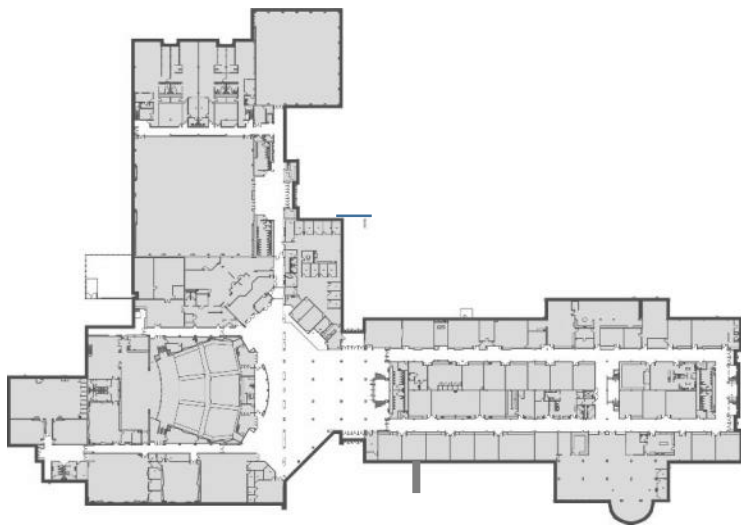
Southwest Middle School

## MIDDLE SCHOOL NEEDS – improvements to accommodate student privacy

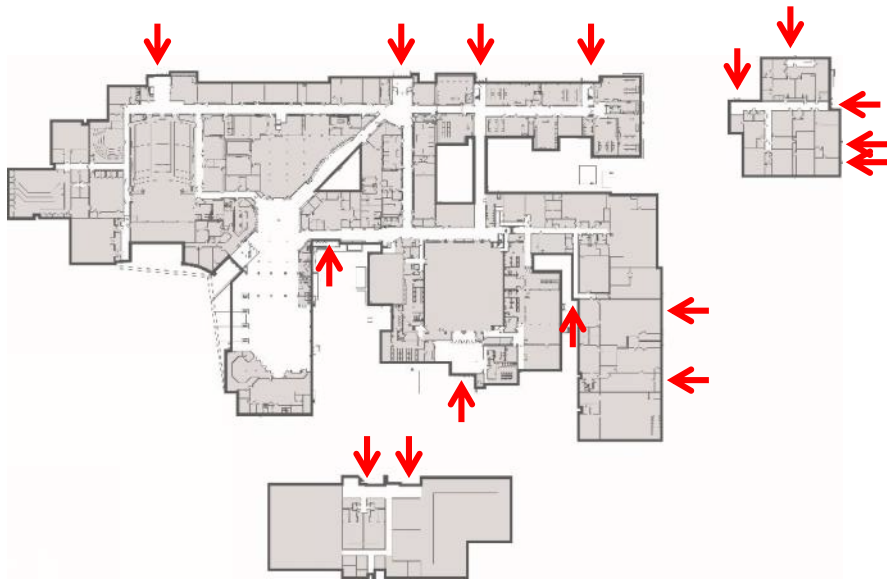
ALL middle schools

- Single occupancy shower + changing stalls needed in locker rooms to provide optional privacy for all students





Free State High School



Lawrence High School

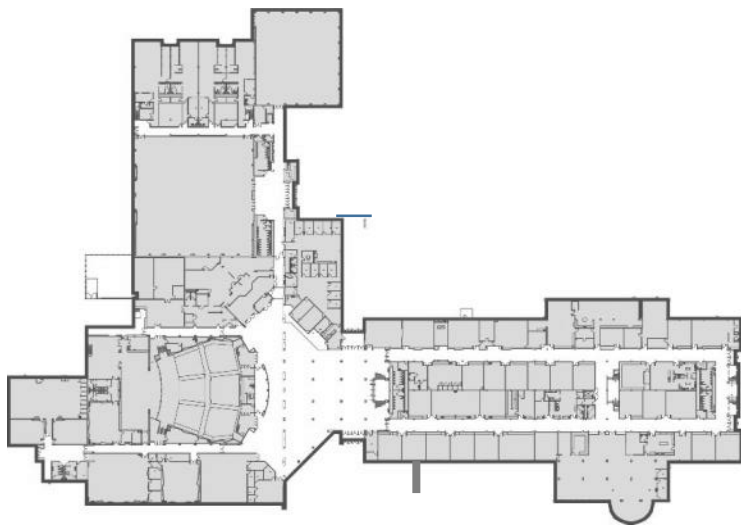
## HIGH SCHOOL NEEDS - safe + secure campus

LHS

- Create a secure campus that supports the secure entry lobby constructed in previous bond effort







Free State High School

## HIGH SCHOOL NEEDS - 21<sup>st</sup> century learning

### FSHS / LHS

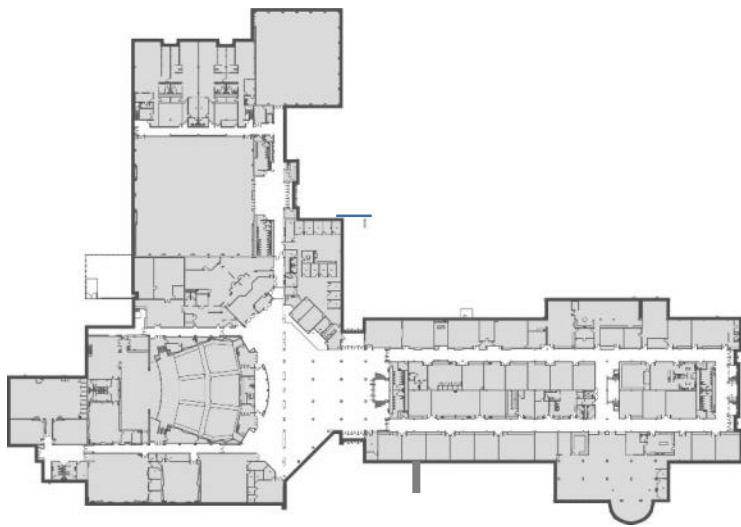
- Create collaborative *Learning Pockets* along corridors, supporting in-class breakout
- Transform library/media centers into a flexible *Innovation Commons*, with support for maker space, project and product-based learning and in-class breakout



Lawrence High School







Free State High School

## HIGH SCHOOL NEEDS - professional space for faculty + flex space

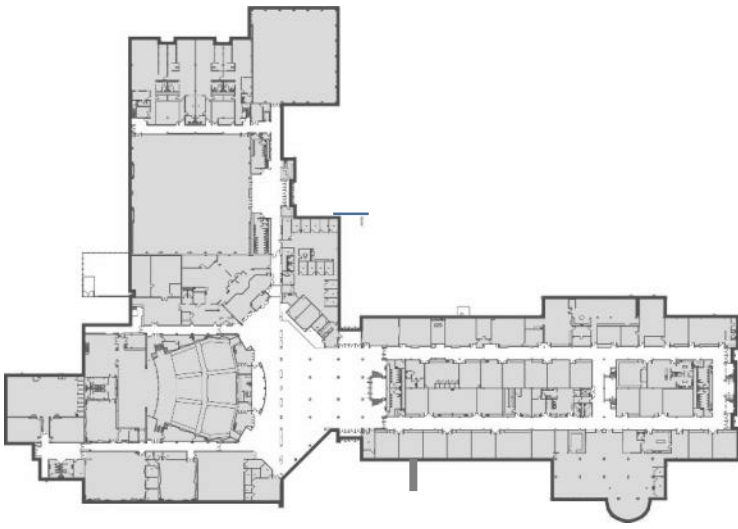
LHS / FSHS

- Provide professional space for faculty to create lesson plans *outside* of the classroom, freeing up general classroom space for formal instruction. This space is also intended to be used as a hot desk for floating faculty.
- Incorporate a flex room to accommodate 60-80 at tables or 150 in rows. Space may be used for testing, all-faculty meetings and multi-class collab.



Lawrence High School



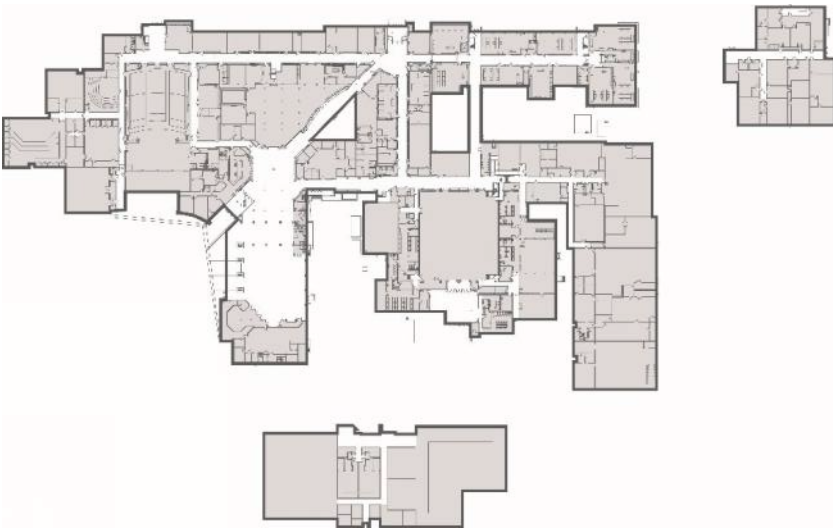


Free State High School

## HIGH SCHOOL NEEDS - accommodate growth

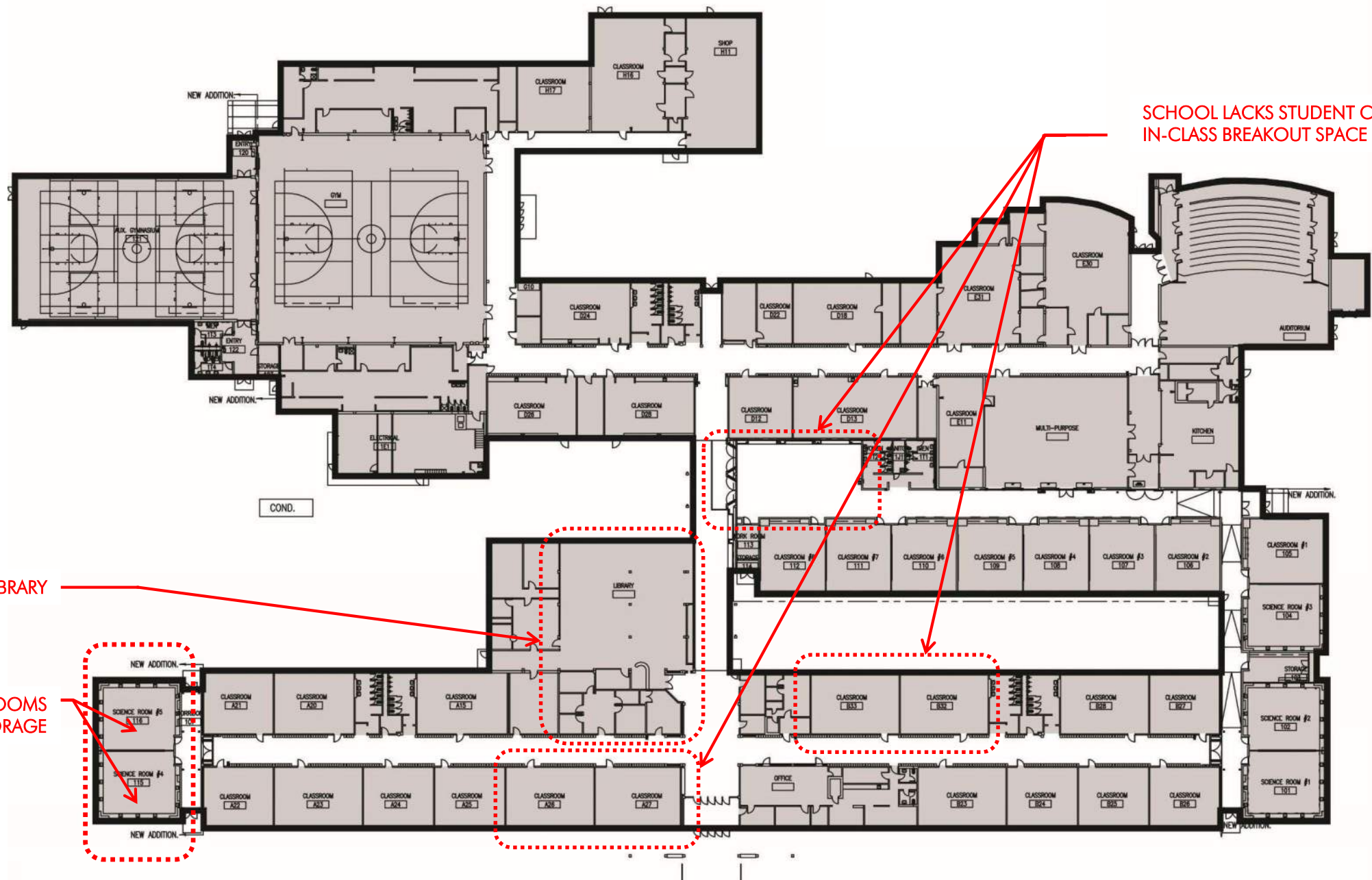
### LHS / FSHS

- Provide additional classroom capacity to accommodate classroom needs projected over the next 5-10 years
  - LHS – (2) additional general classrooms
  - FSHS – (7) additional general classrooms

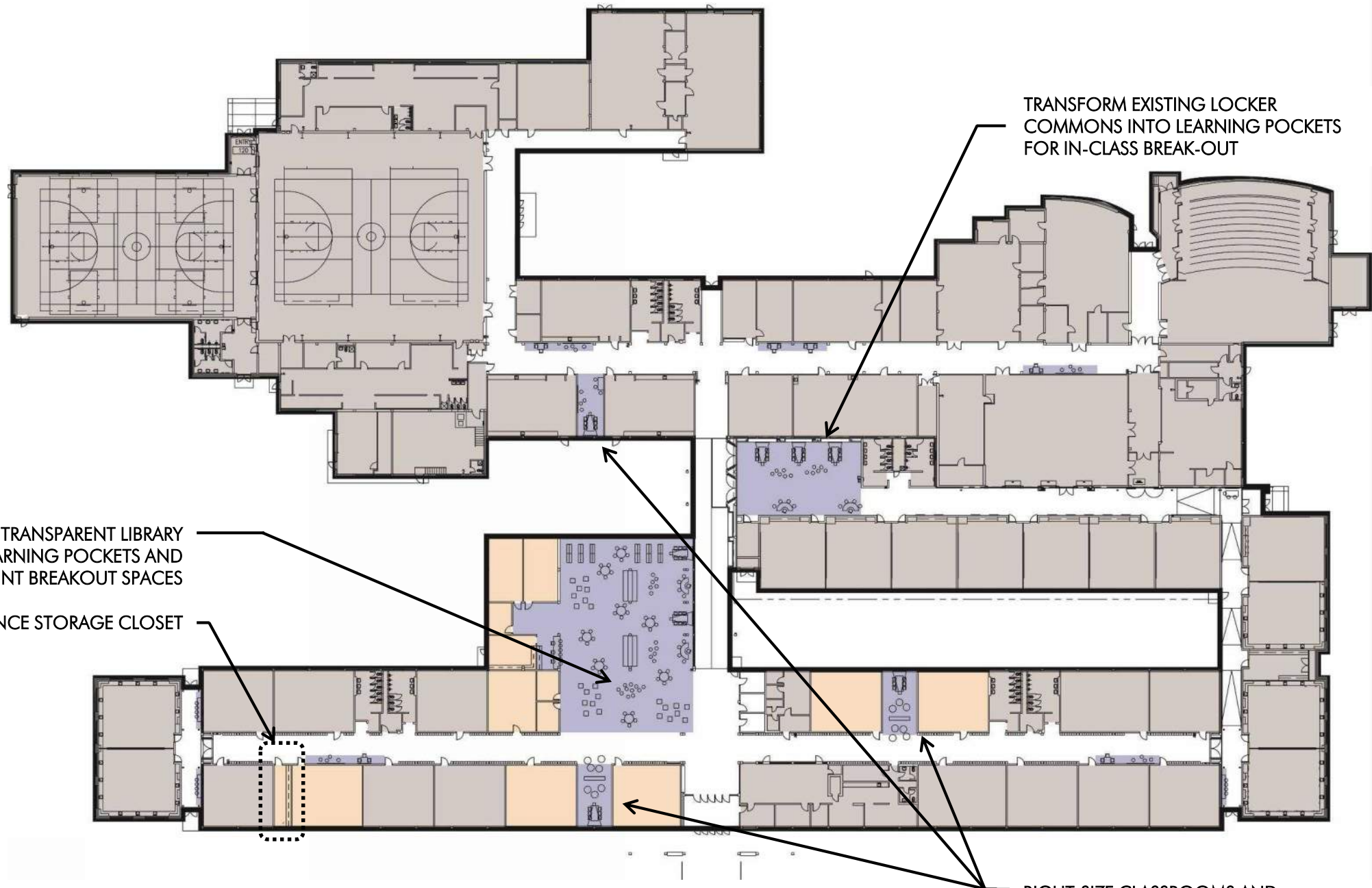


Lawrence High School

# A PLAN FOR LAWRENCE MIDDLE SCHOOLS

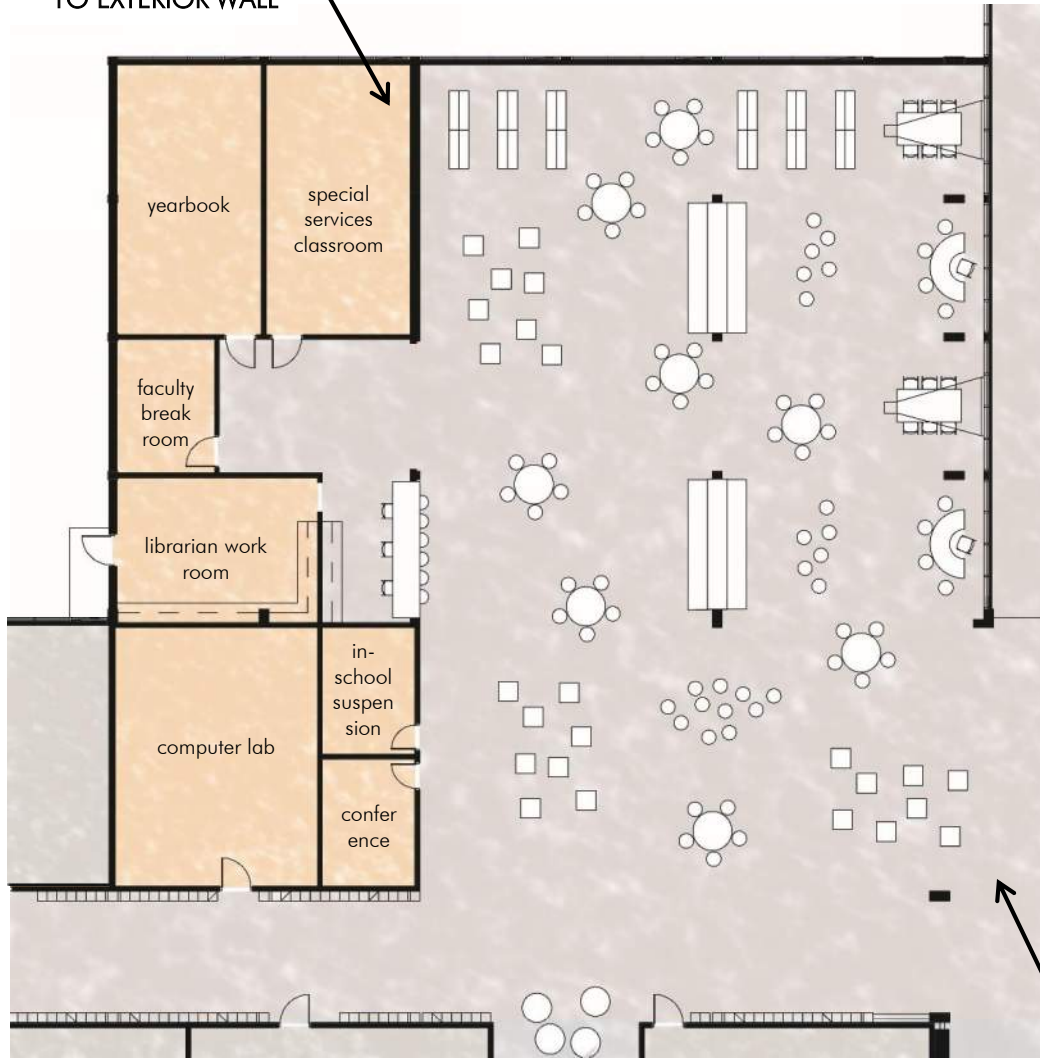




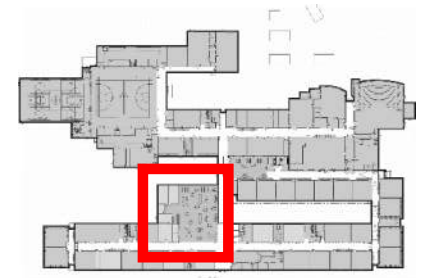


WMS – PROPOSED FLOOR PLAN

RELOCATE CLASSROOMS  
TO EXTERIOR WALL



REMOVE WALLS TO OPEN UP LIBRARY,  
CREATING AN *INNOVATION COMMONS*  
SUPPORTING IN-CLASS BREAK-OUT, PROJECT  
AND PRODUCT-BASED LEARNING AND MEDIA  
RESOURCES





QUIET STUDY ZONE

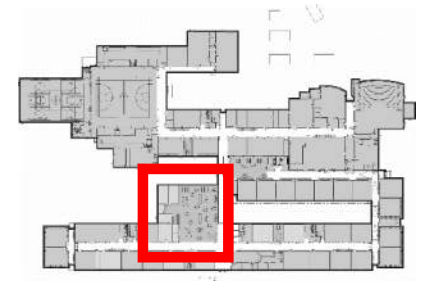


GROUP STUDY

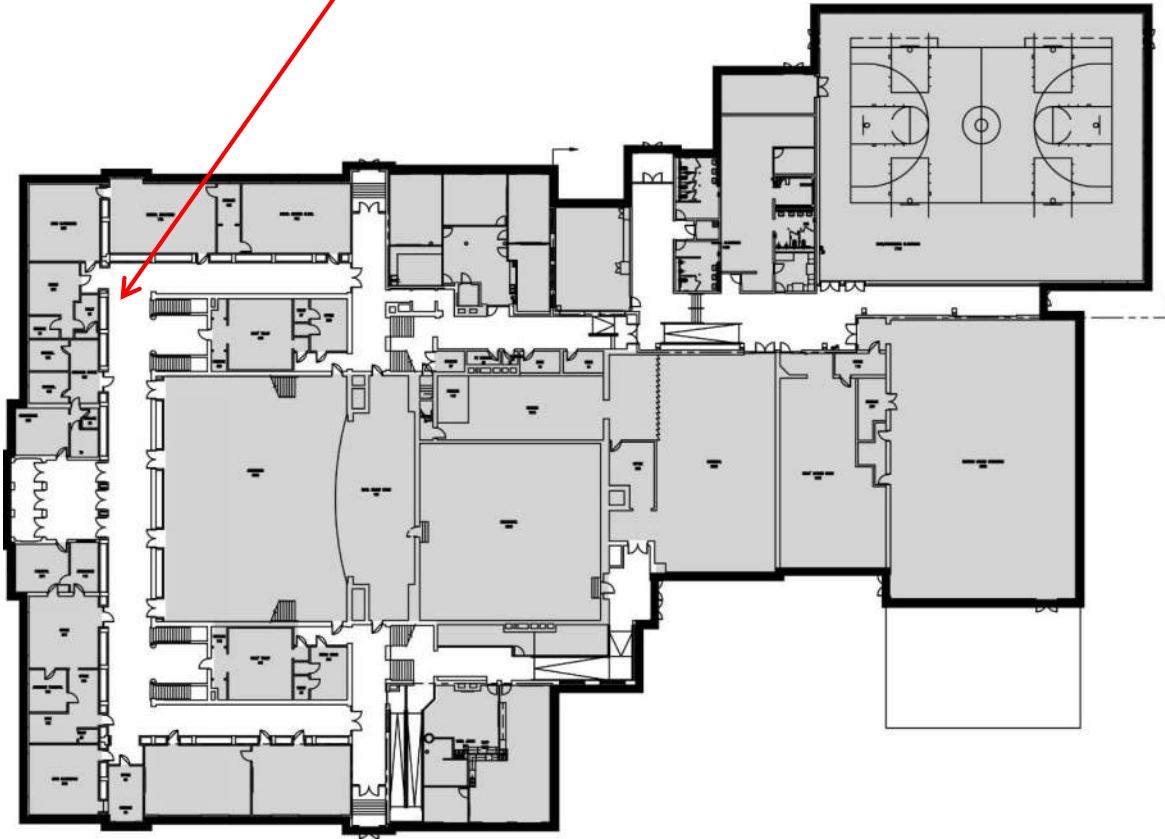
HELP DESK / GENIUS BAR



SOCIAL / STUDY COMMONS + LEARNING POCKET FOR IN-CLASS BREAKOUT

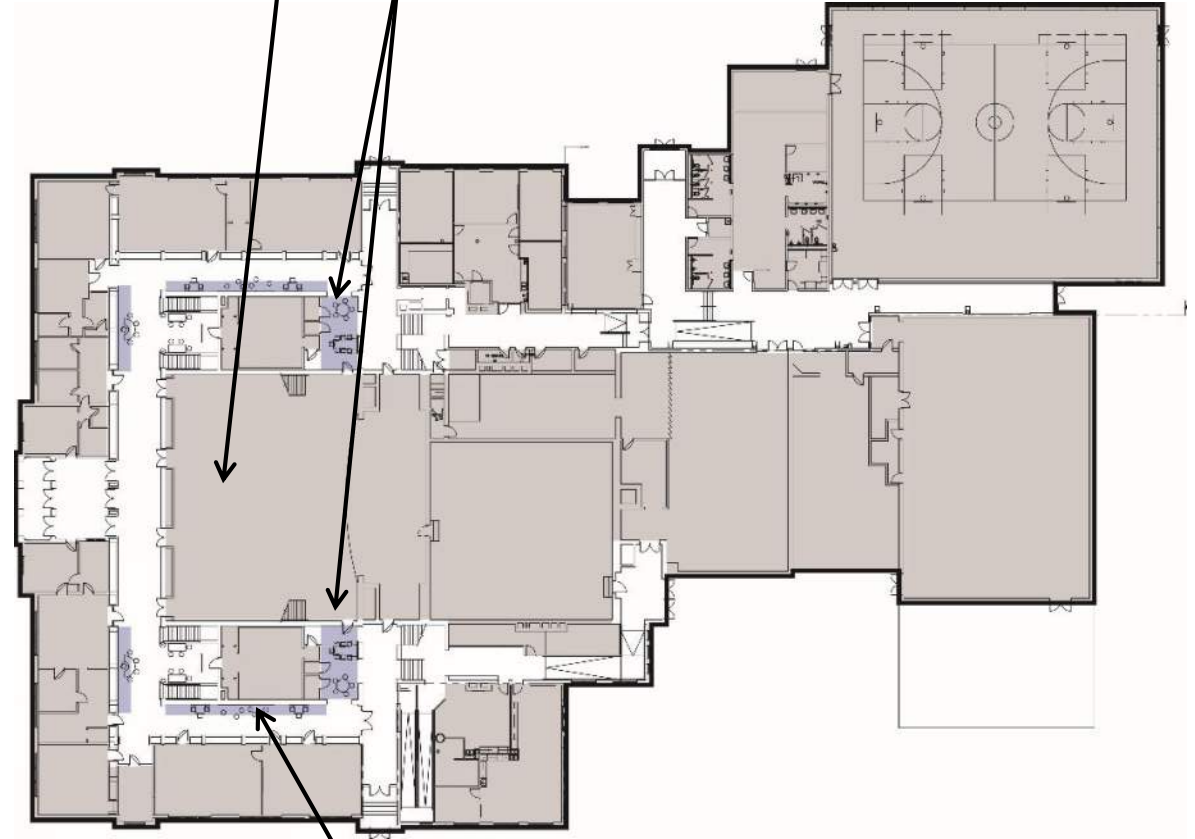


SCHOOL LACKS STUDENT COLLABORATION +  
IN-CLASS BREAKOUT SPACE



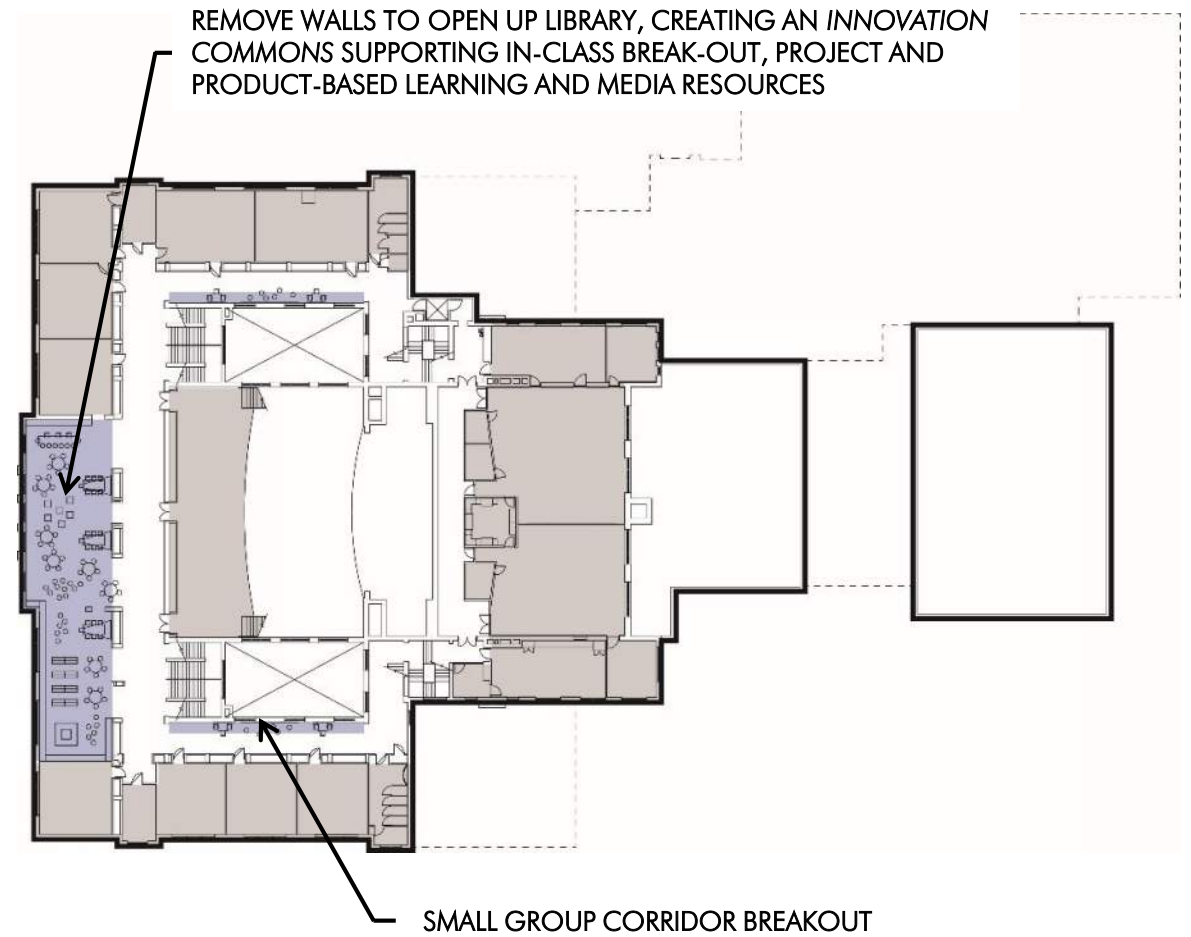
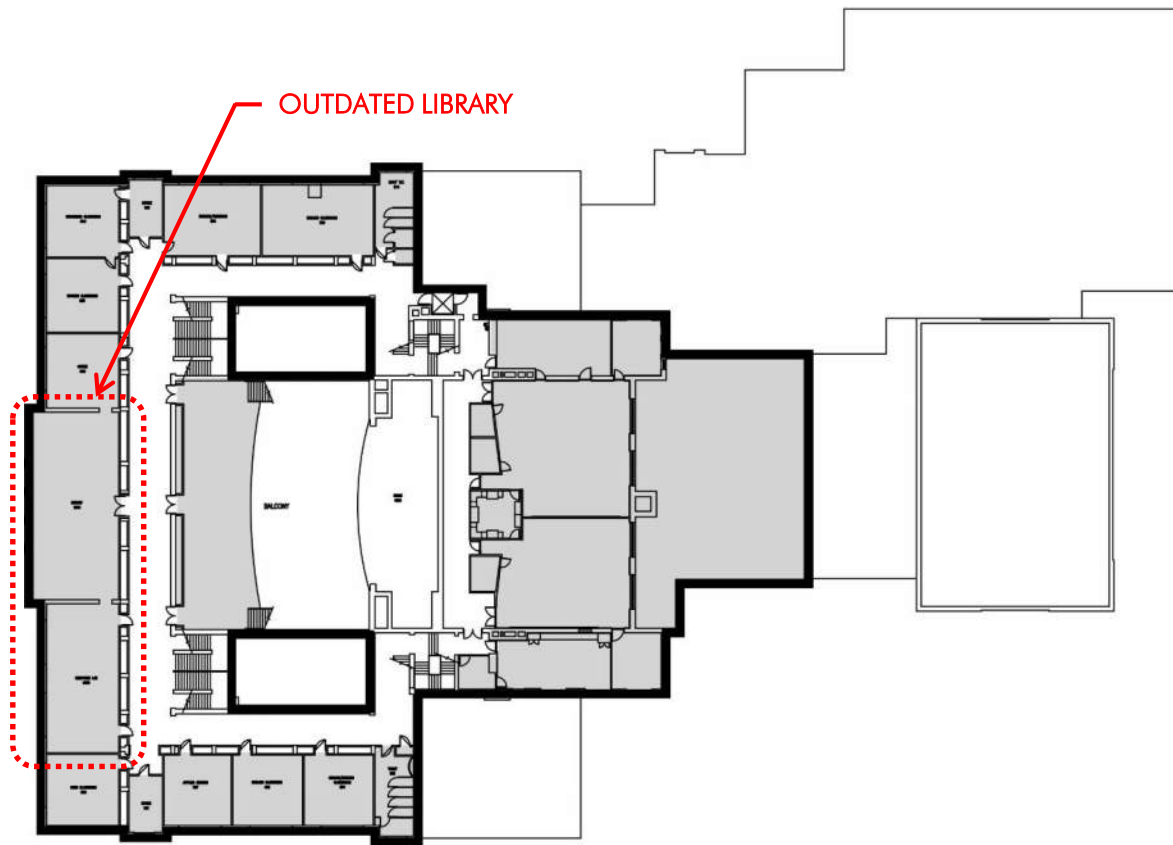
TECHNOLOGY UPGRADES IN AUDITORIUM

LARGE GROUP STUDENT BREAKOUT SPACES

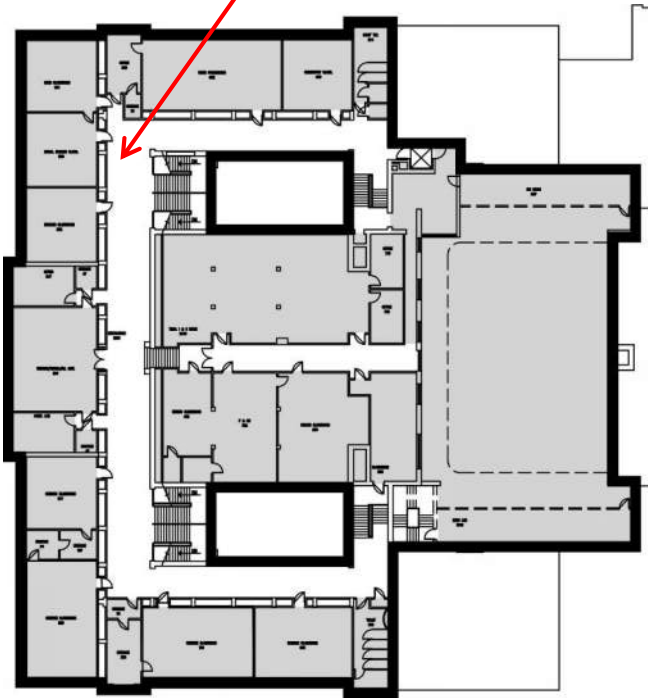


SMALL GROUP BREAKOUT ALONG CORRIDORS

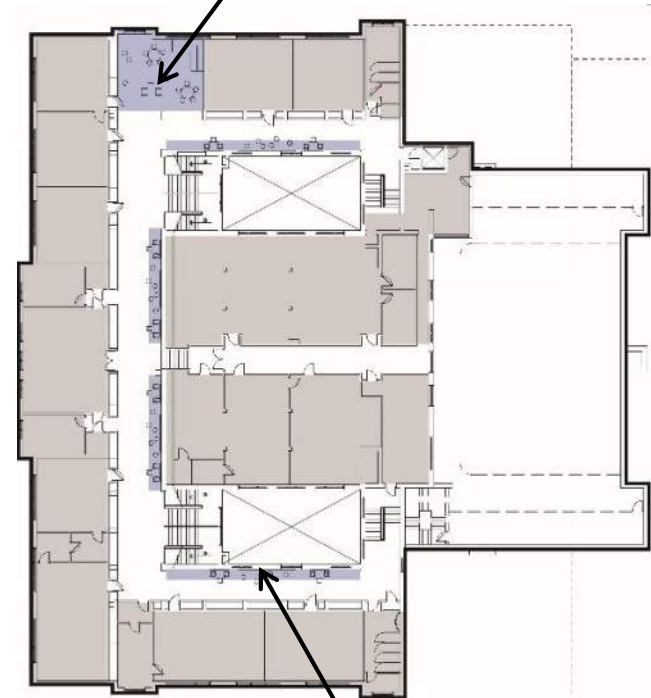




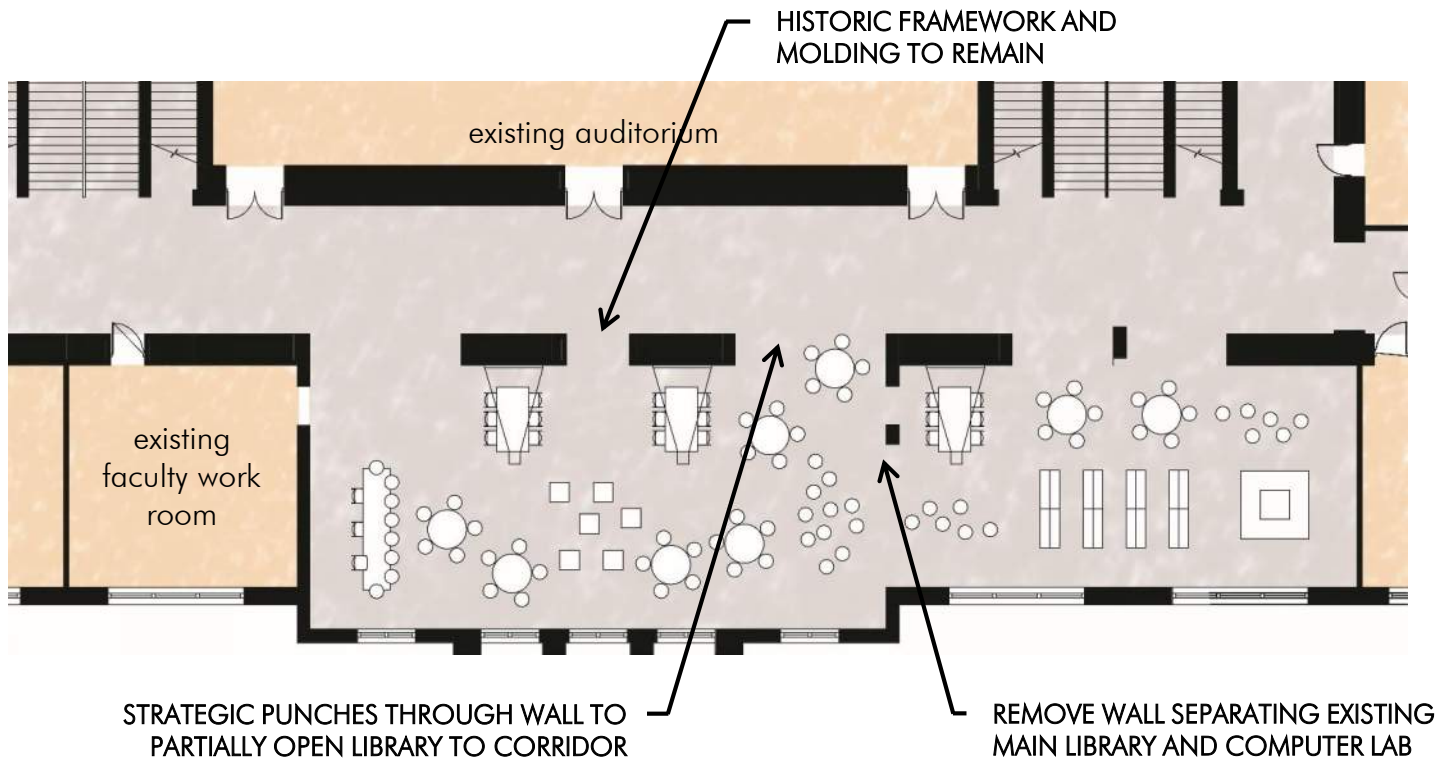
SCHOOL LACKS STUDENT COLLABORATION +  
IN-CLASS BREAKOUT SPACE



LARGE GROUP STUDENT BREAKOUT



SMALL GROUP CORRIDOR BREAKOUT



Liberty Memorial Central Middle School Library (existing)





HELP DESK / GENIUS BAR  
SUPPORT TO TEACHERS AND STUDENTS FOR 1:1 INITIATIVE



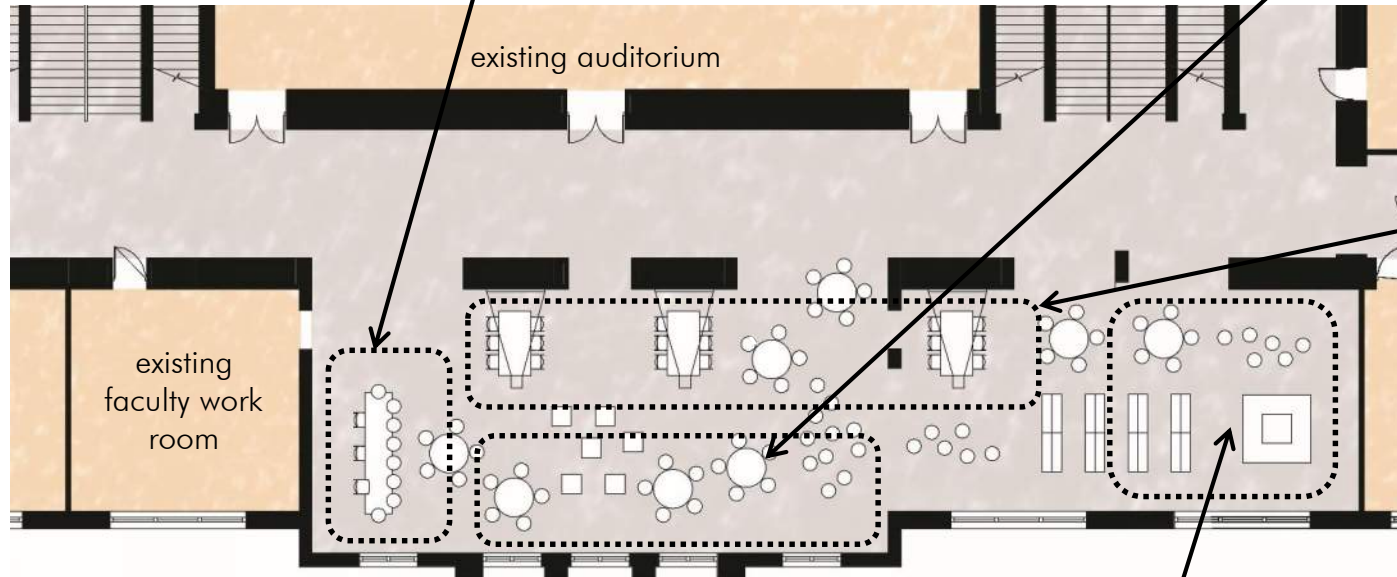
SOCIAL / STUDY COMMONS



LARGE GROUP / TEAM STUDY

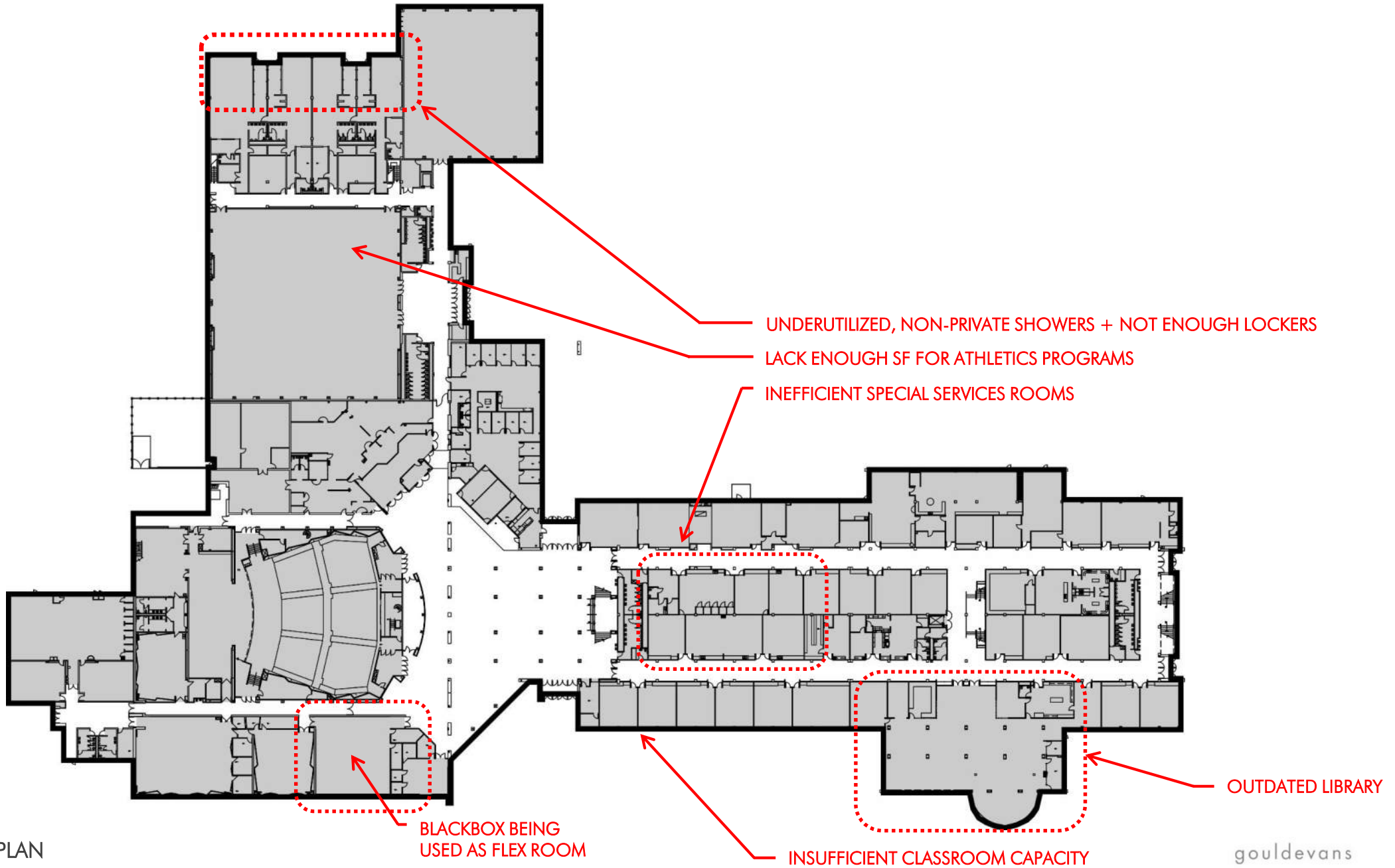


QUIET STUDY ZONE





# A PLAN FOR LAWRENCE HIGH SCHOOLS



FSHS – EXISTING FLOOR PLAN

FSHS – PROPOSED FIRST FLOOR

NET GAIN OF 7  
CLASSROOMS

INDIVIDUAL SHOWER + CHANGING STALLS

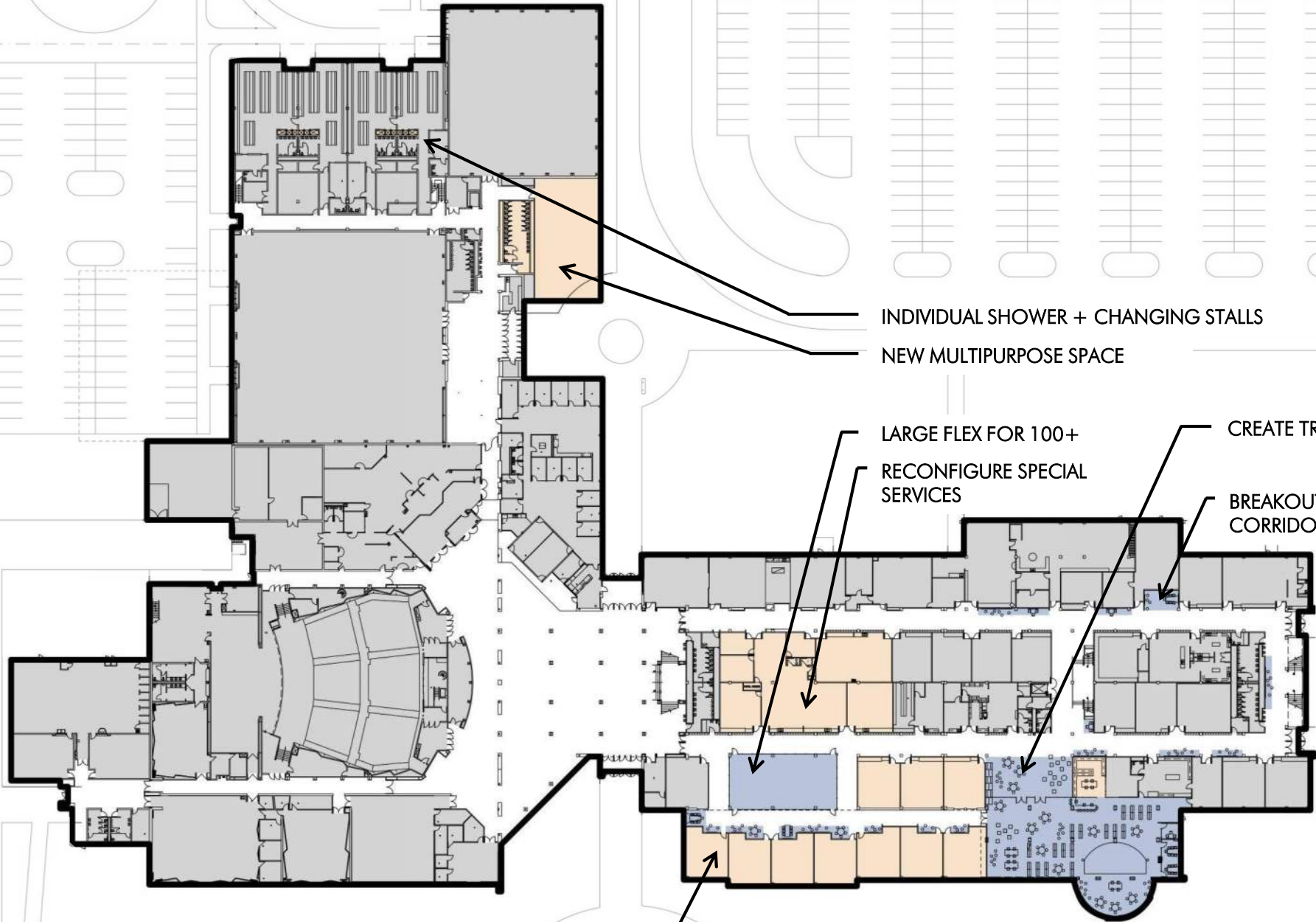
NEW MULTIPURPOSE SPACE

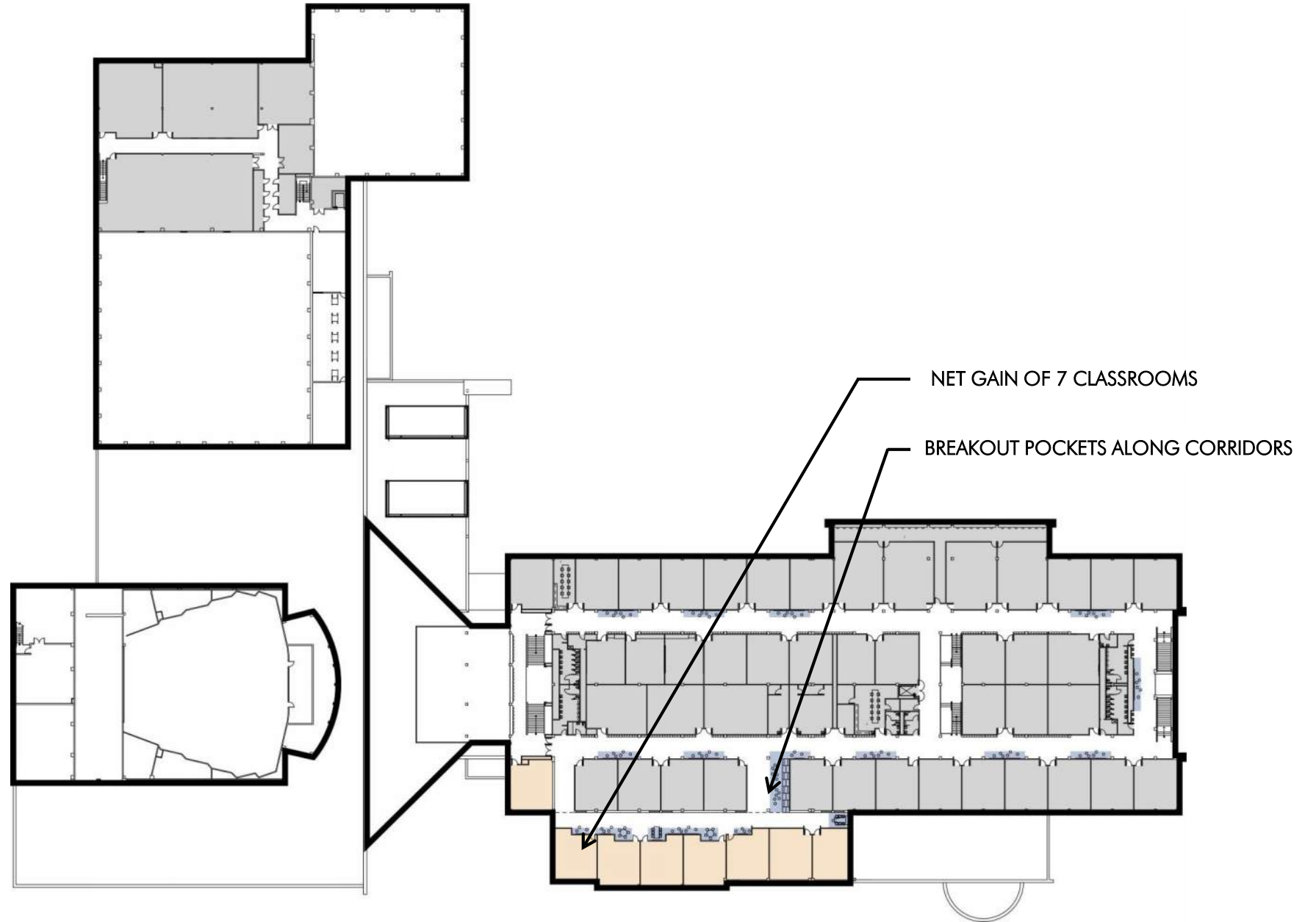
LARGE FLEX FOR 100+

RECONFIGURE SPECIAL  
SERVICES

CREATE TRANSPARENCY IN LIBRARY

BREAKOUT POCKETS ALONG  
CORRIDORS



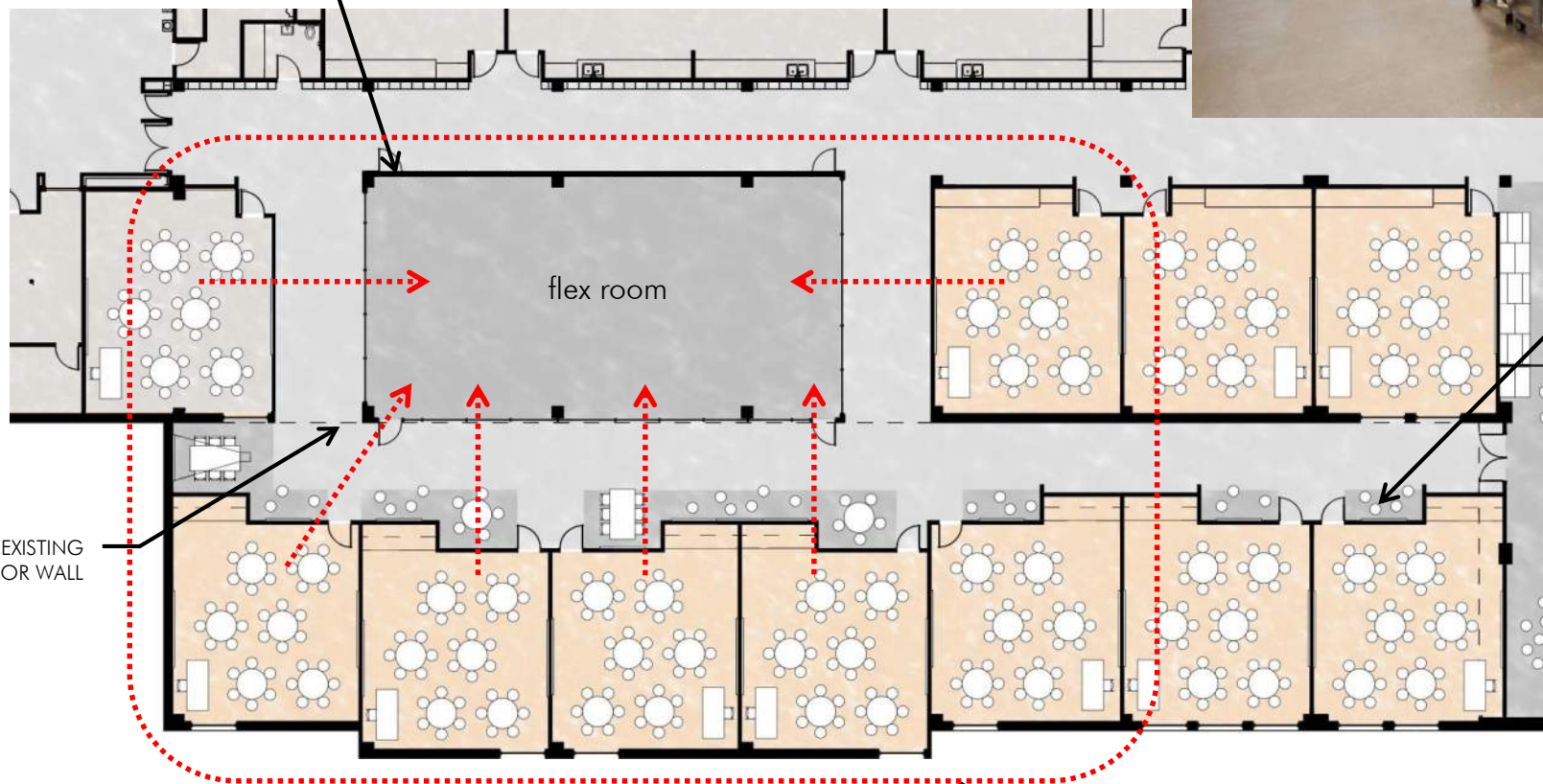


FSHS – PROPOSED SECOND FLOOR





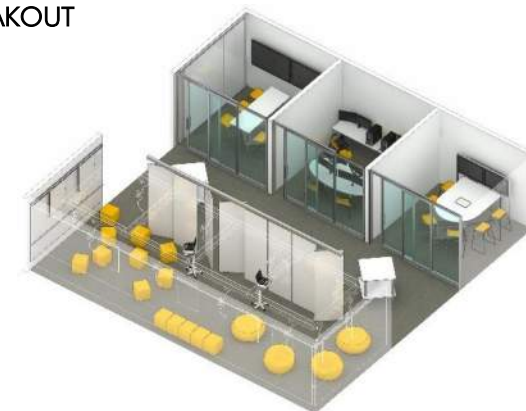
STUDENT WORK DISPLAY WALL



CORRIDOR BREAKOUT

FSHS – PROPOSED INNOVATION WING / FLEX ROOM

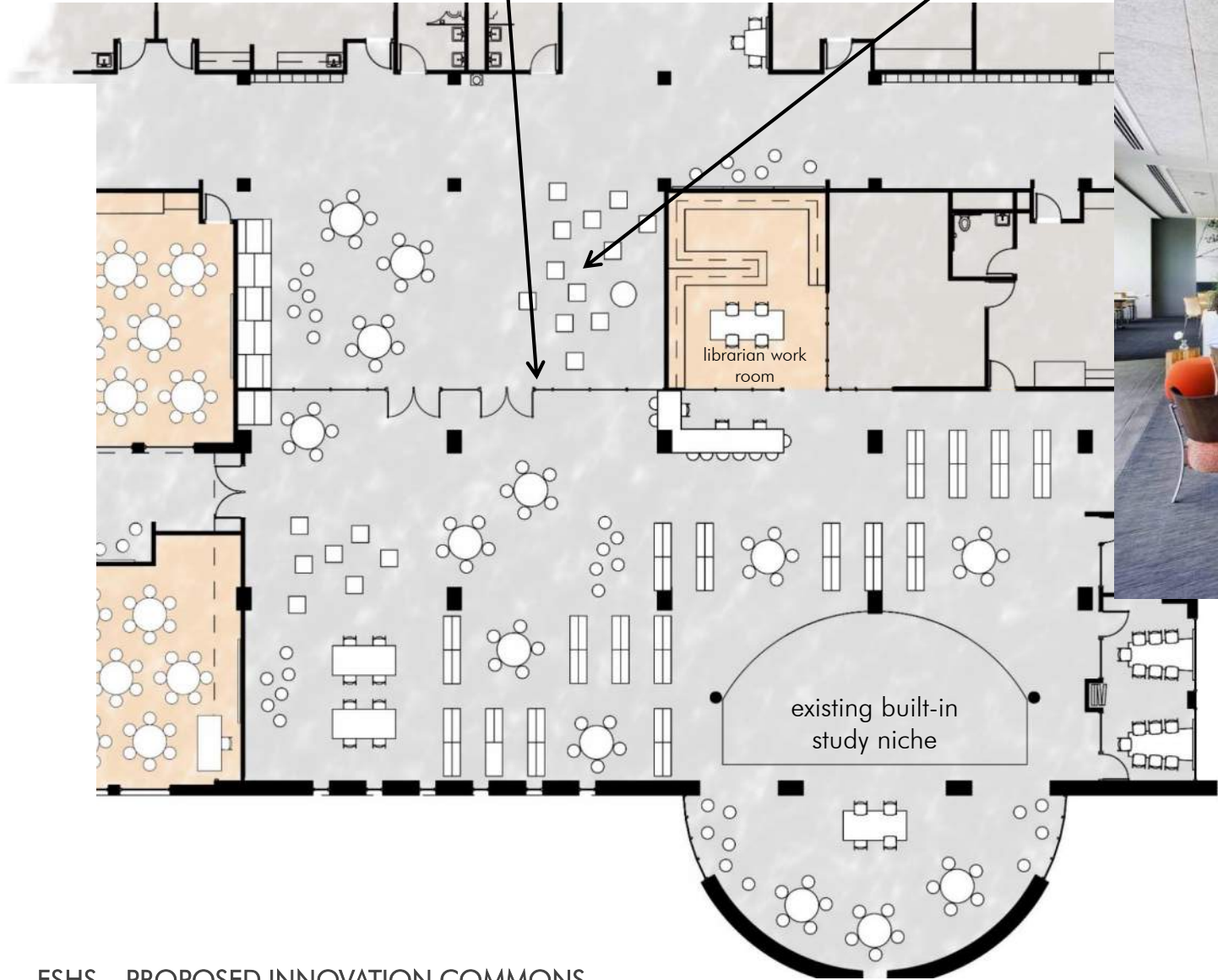
"INNOVATION CENTER"



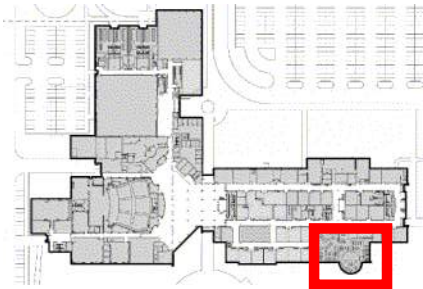


PUSH BACK LIBRARY "QUIET ZONE" BOUNDARY  
CREATE LEARNING POCKET OFF CORRIDOR

LARGE LEARNING POCKET, SUPPORTING BOTH IN-CLASS AND MEDIA FUNCTIONS, BLURS  
LINES BETWEEN PUBLIC SPACES, CLASSROOM AND LIBRARY.



FSHS – PROPOSED INNOVATION COMMONS





SOCIAL STUDY / COMMONS



INFORMAL STUDENT PITCH SPACE



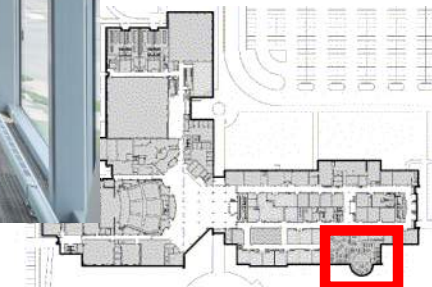
HELP DESK / GENIUS BAR  
SUPPORT TO TEACHERS AND STUDENTS FOR 1:1 INITIATIVE



LARGE GROUP / TEAM STUDY

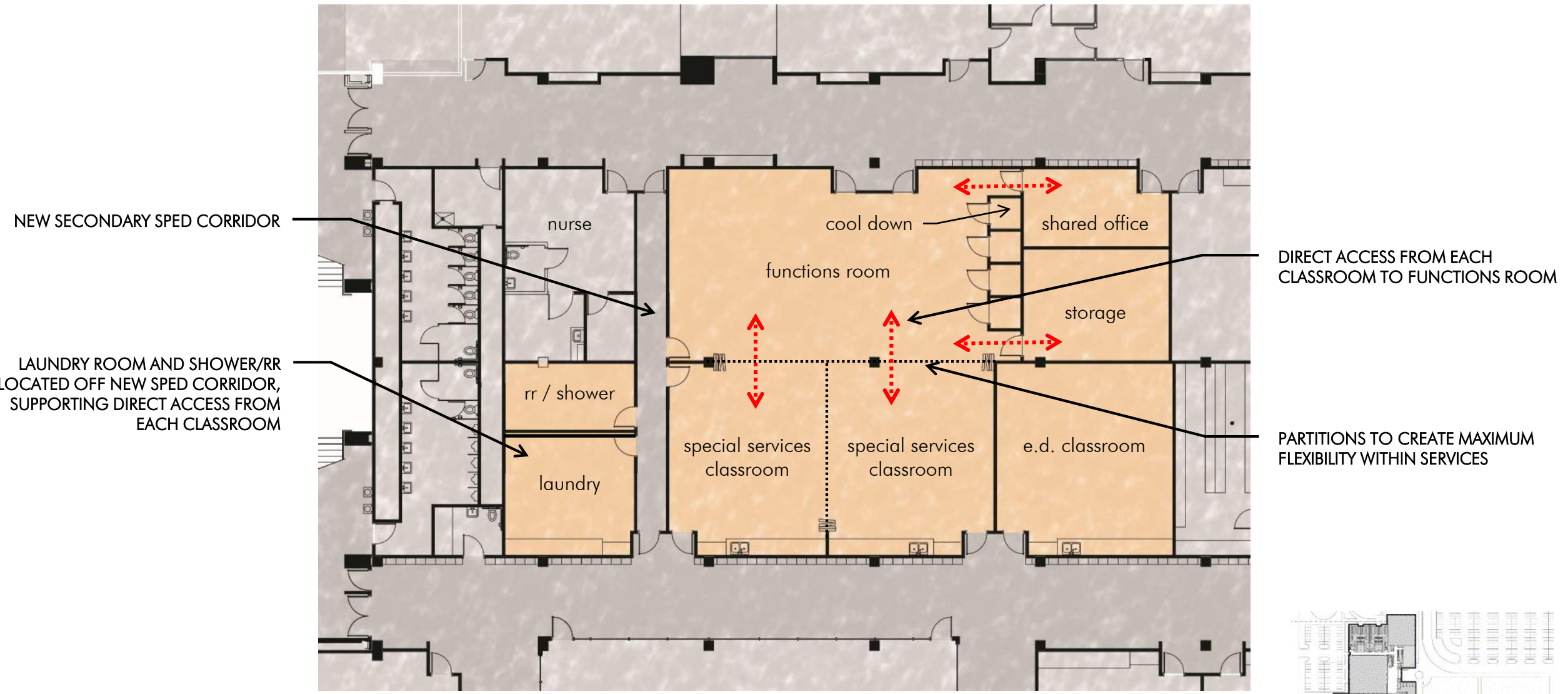


QUIET STUDY ZONE

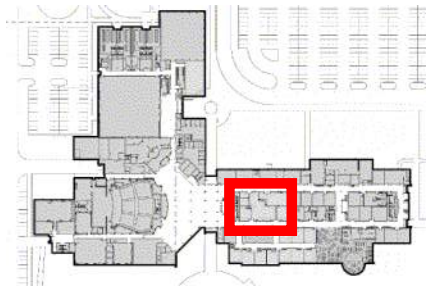


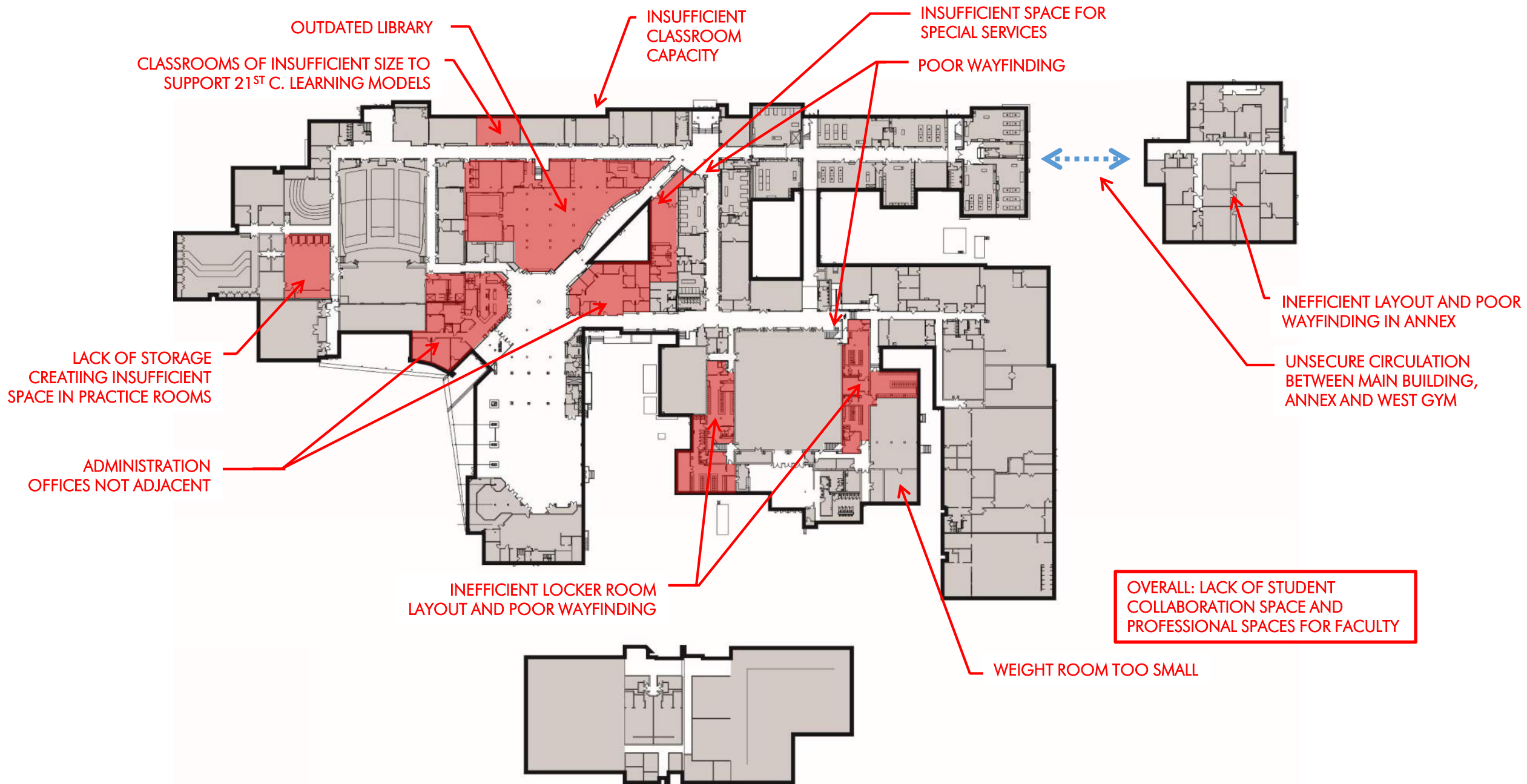






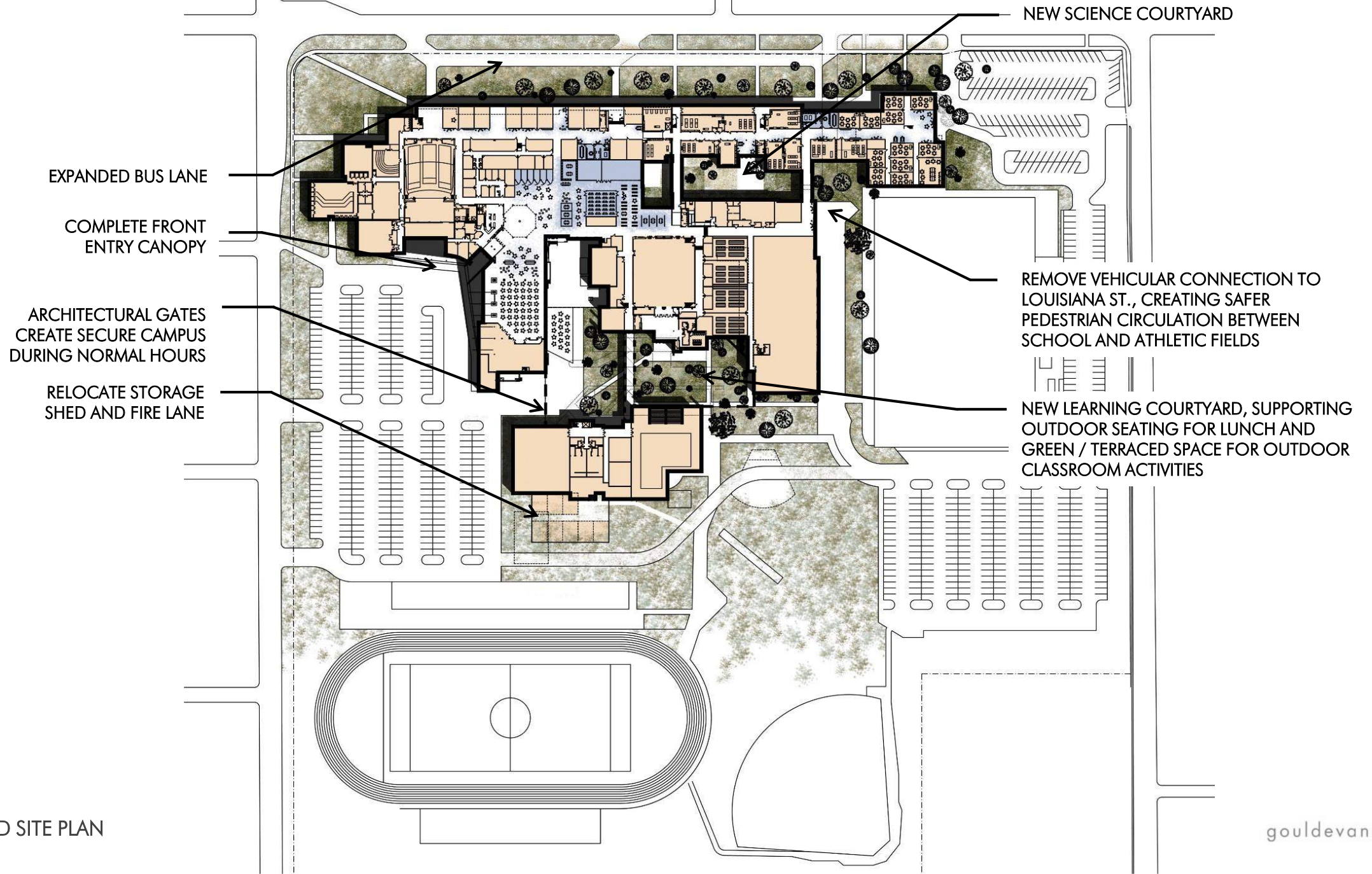
FSHS – REVISED LAYOUT FOR SPECIAL SERVICES



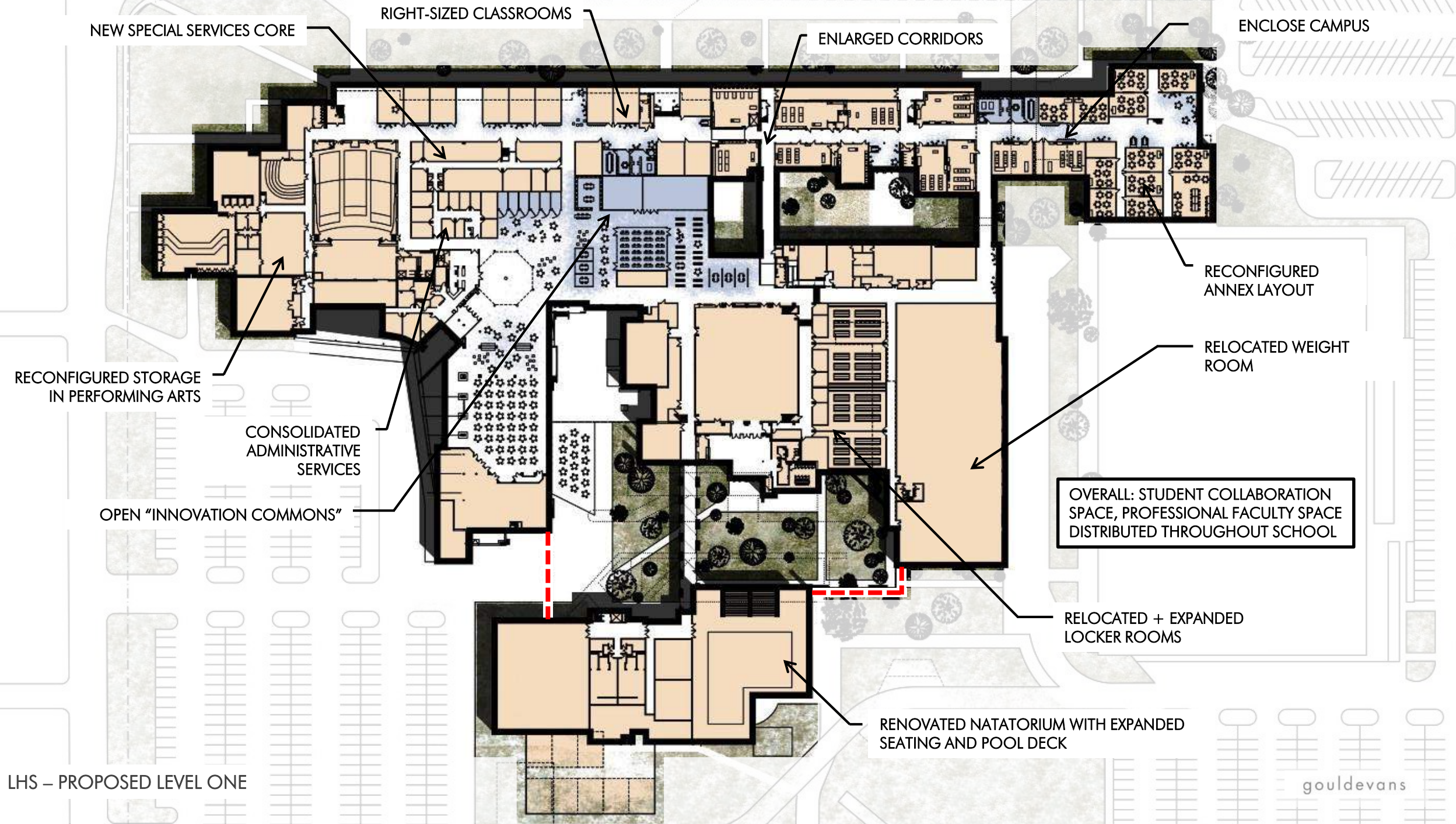


LHS – EXISTING FLOOR PLAN

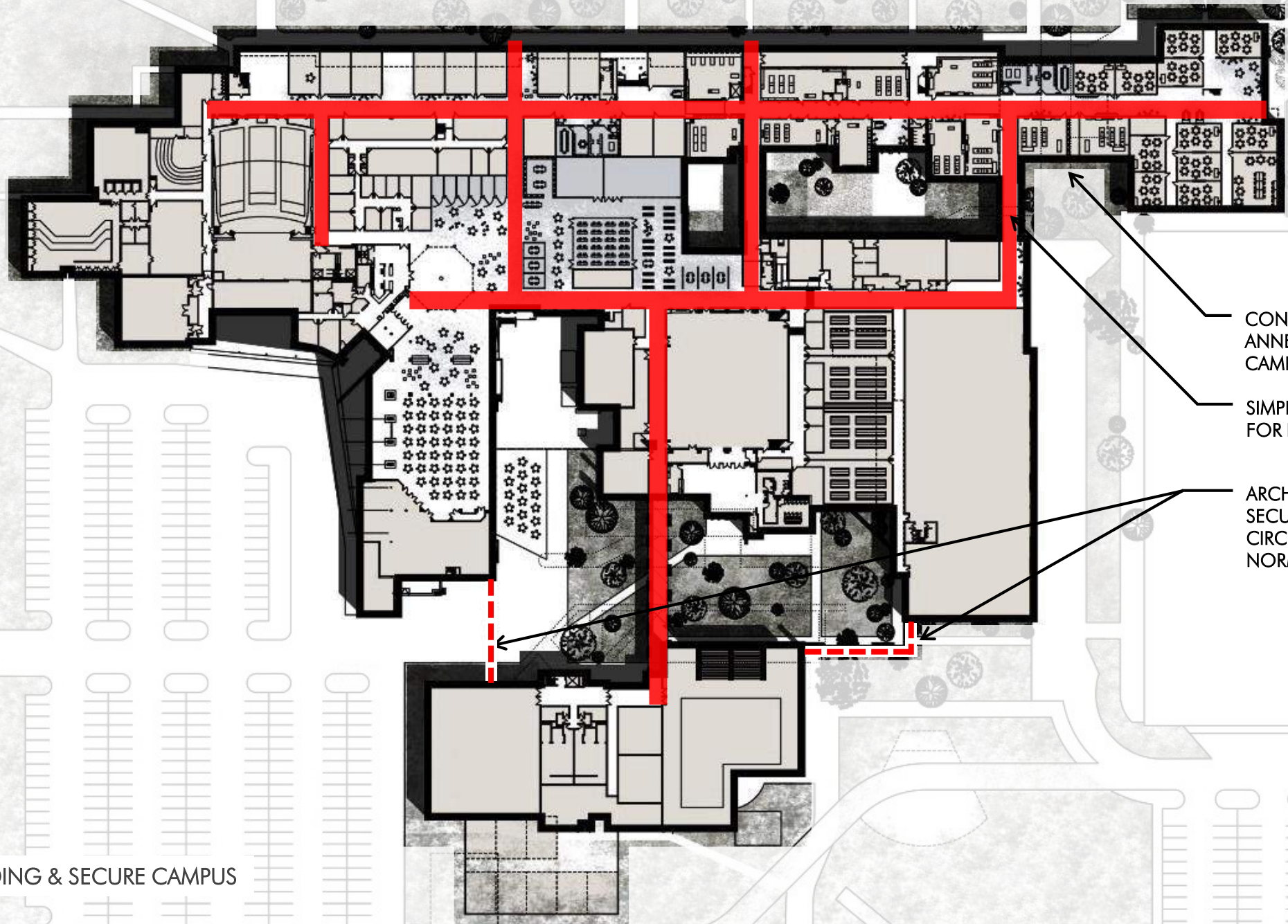








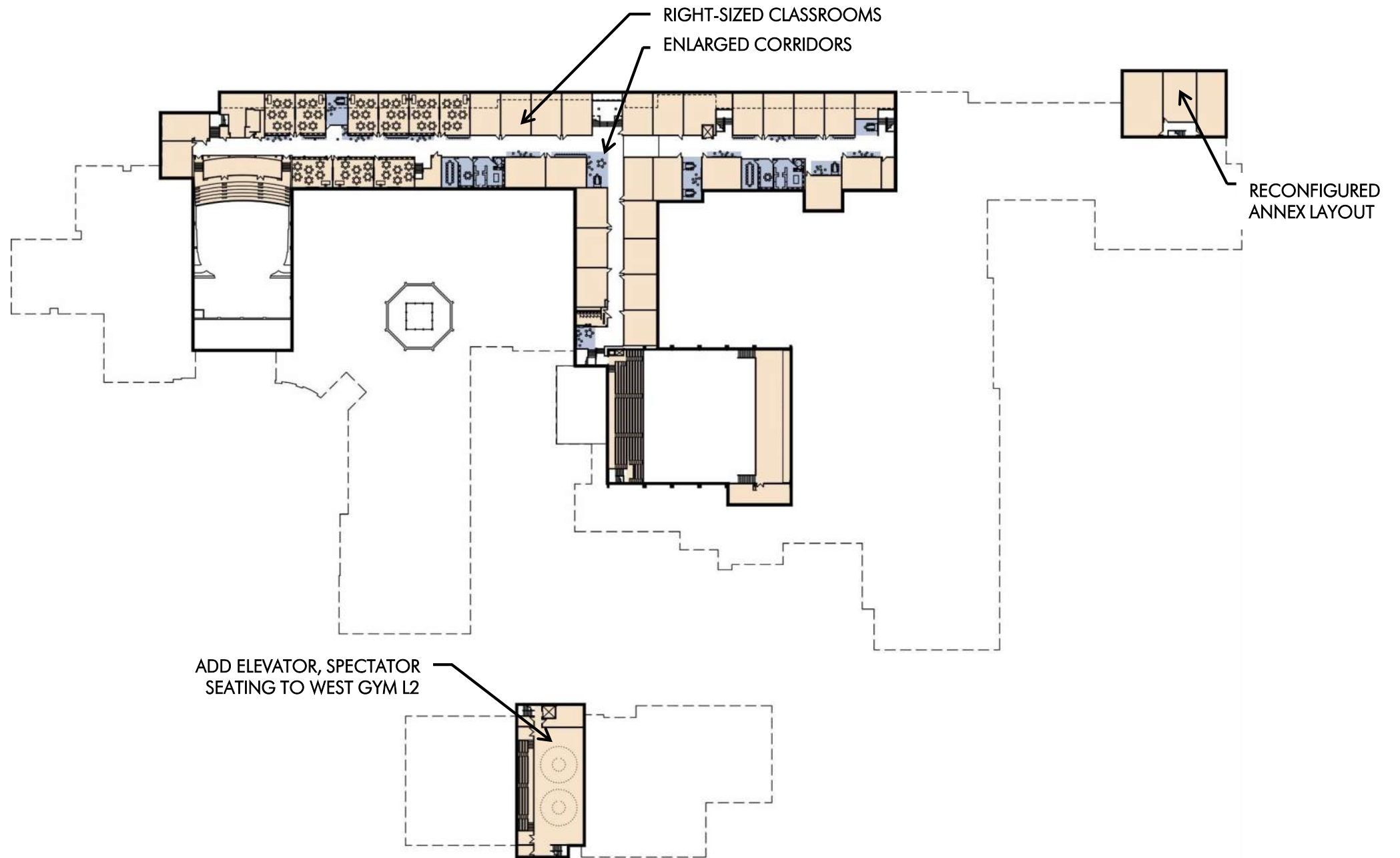




CONNECTION TO  
ANNEX ENCLOSES LHS  
CAMPUS

SIMPLIFIED CIRCULATION  
FOR EASY WAYFINDING

ARCHITECTURAL GATES  
SECURE CAMPUS  
CIRCULATION DURING  
NORMAL HOURS

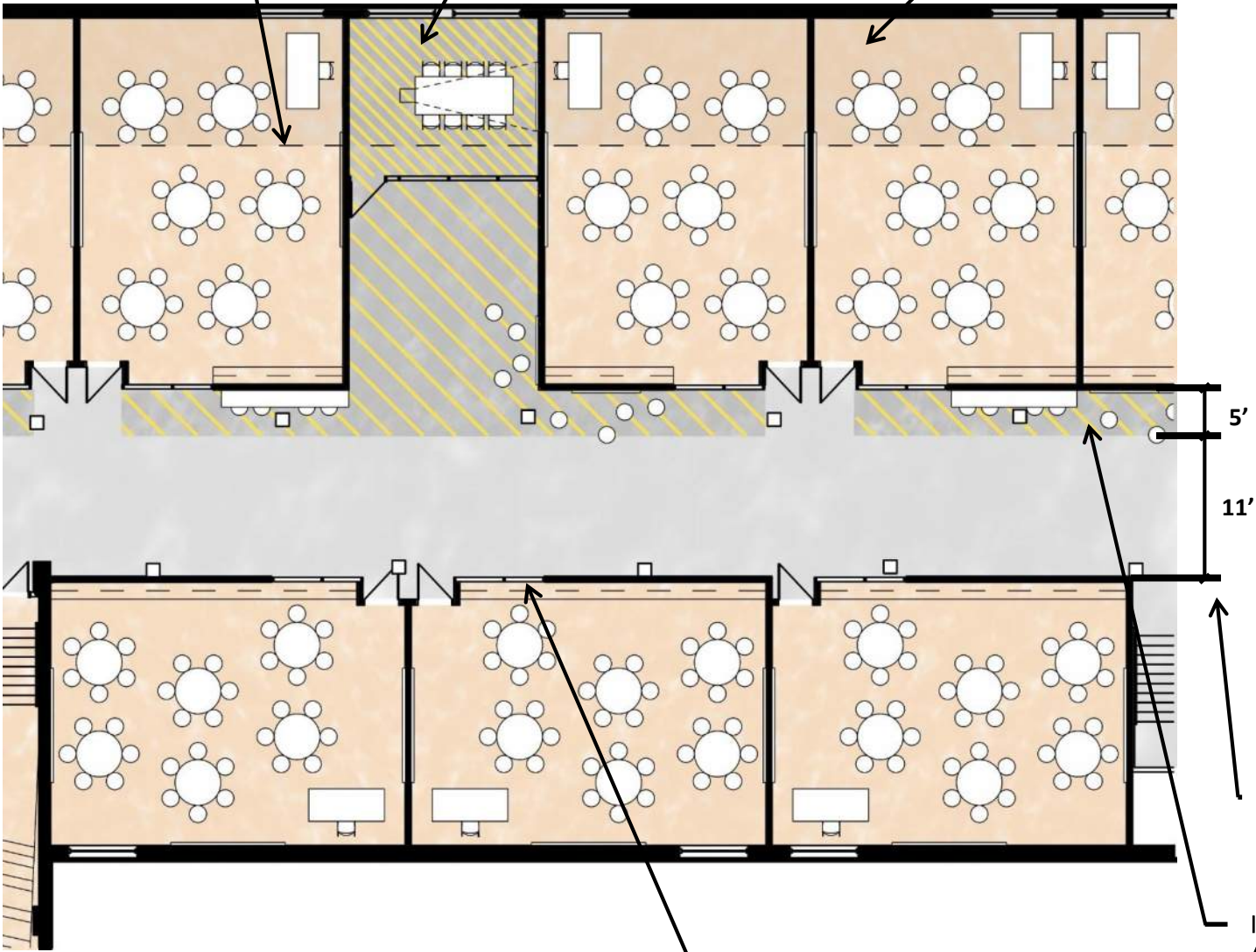




EXISTING EAST EXTERIOR WALL

SMALL STUDENT BREAKOUT ROOM  
1 EVERY 4-5 CLASSROOMS, 200 SF EACH

TYPICAL CLASSROOM ACCOMMODATING  
PROJECT-BASED LEARNING  
57 TOTAL, 720 SF EACH



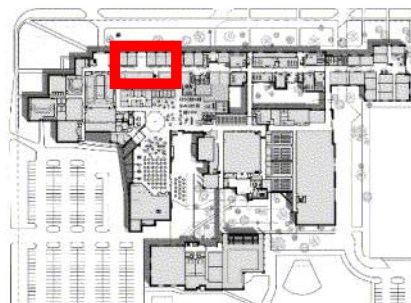
Lawrence High School Existing Corridor

WIDER CORRIDOR  
REMOVE LOCKERS,  
EXPAND FAÇADE EAST

IN-CLASS BREAKOUT CONTINUOUS  
ALONG CORRIDOR, CREATING  
SECONDARY LEARNING SPACES  
DIRECTLY ADJACENT TO EACH  
CLASSROOM

VISIBILITY BETWEEN CLASSROOM  
AND BREAKOUT SPACES

LHS - TYP. DEPARTMENT CORRIDOR

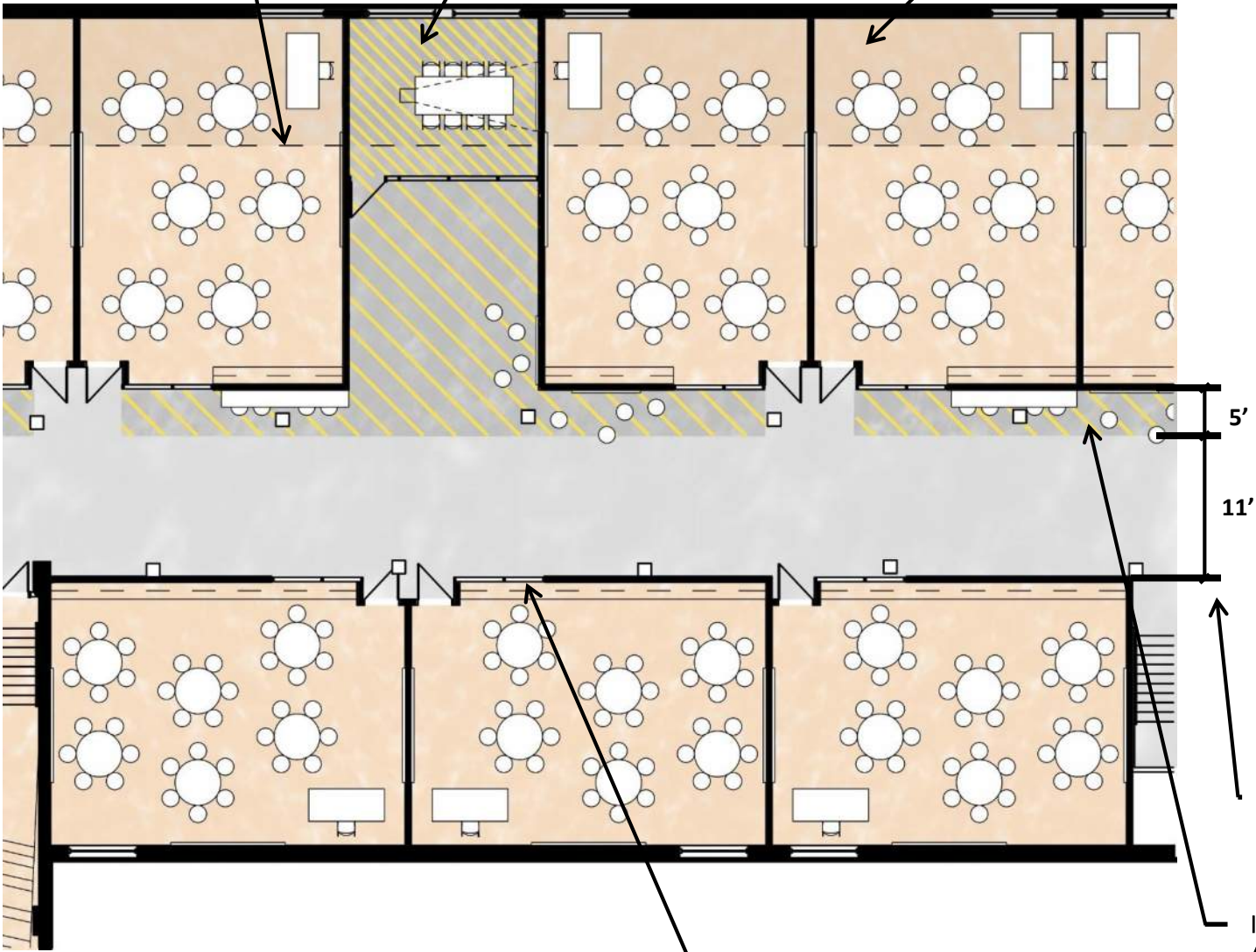




EXISTING EAST EXTERIOR WALL

SMALL STUDENT BREAKOUT ROOM  
1 EVERY 4-5 CLASSROOMS, 200 SF EACH

TYPICAL CLASSROOM ACCOMMODATING  
PROJECT-BASED LEARNING  
57 TOTAL, 720 SF EACH

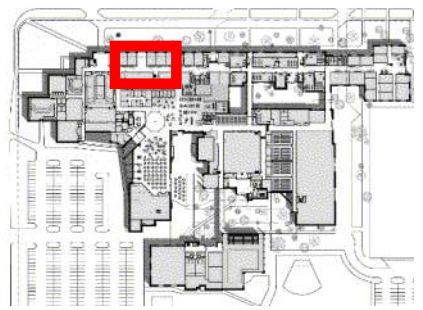


WIDER CORRIDOR  
REMOVE LOCKERS,  
EXPAND FAÇADE EAST

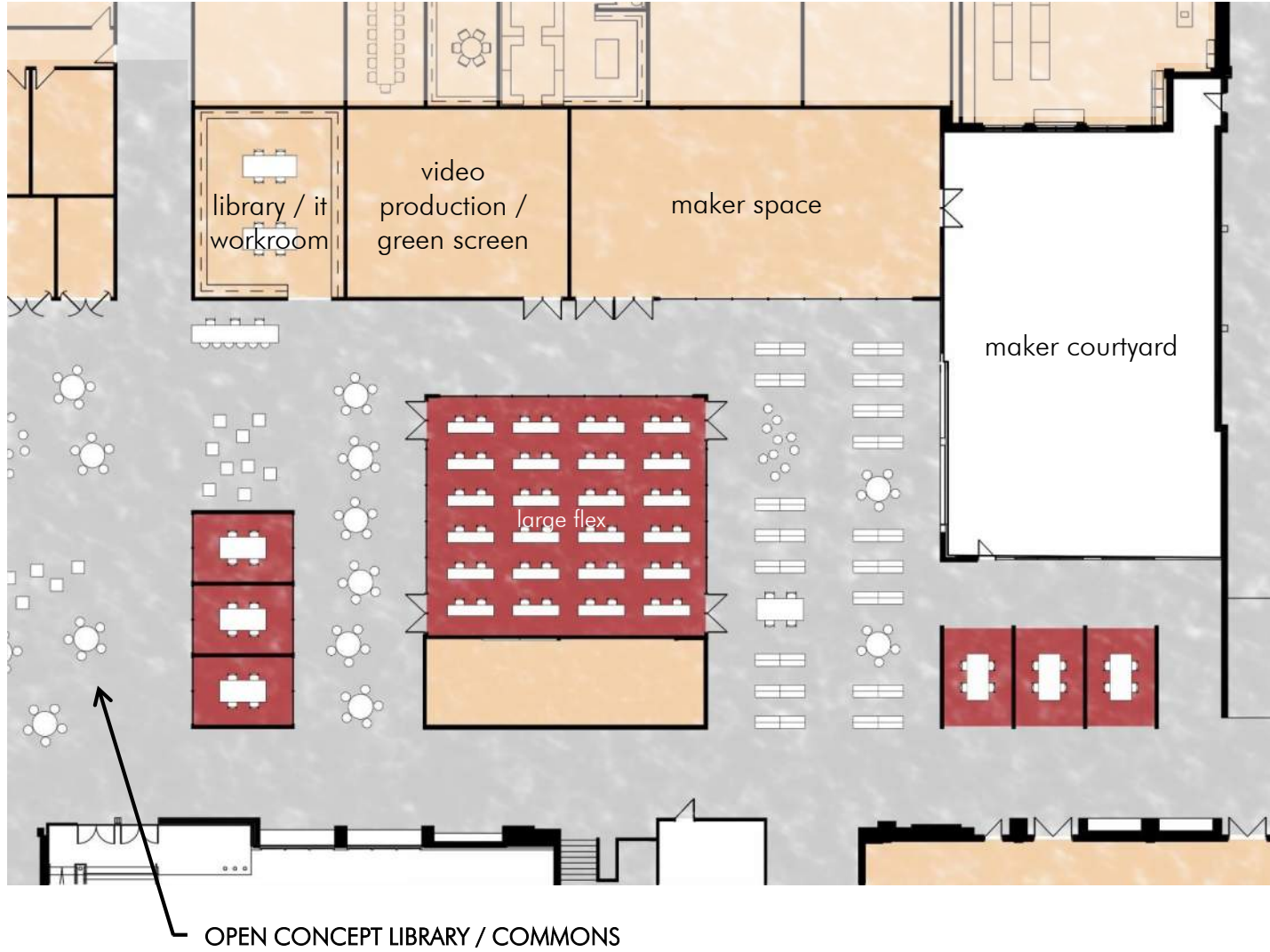
IN-CLASS BREAKOUT CONTINUOUS  
ALONG CORRIDOR, CREATING  
SECONDARY LEARNING SPACES  
DIRECTLY ADJACENT TO EA  
CLASSROOM

VISIBILITY BETWEEN CLASSROOM  
AND BREAKOUT SPACES

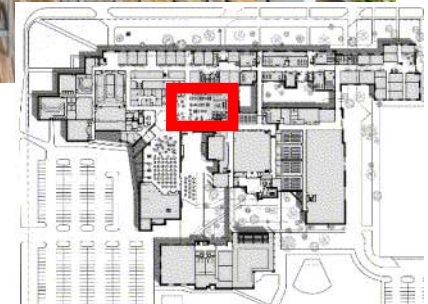
LHS - TYP. DEPARTMENT CORRIDOR



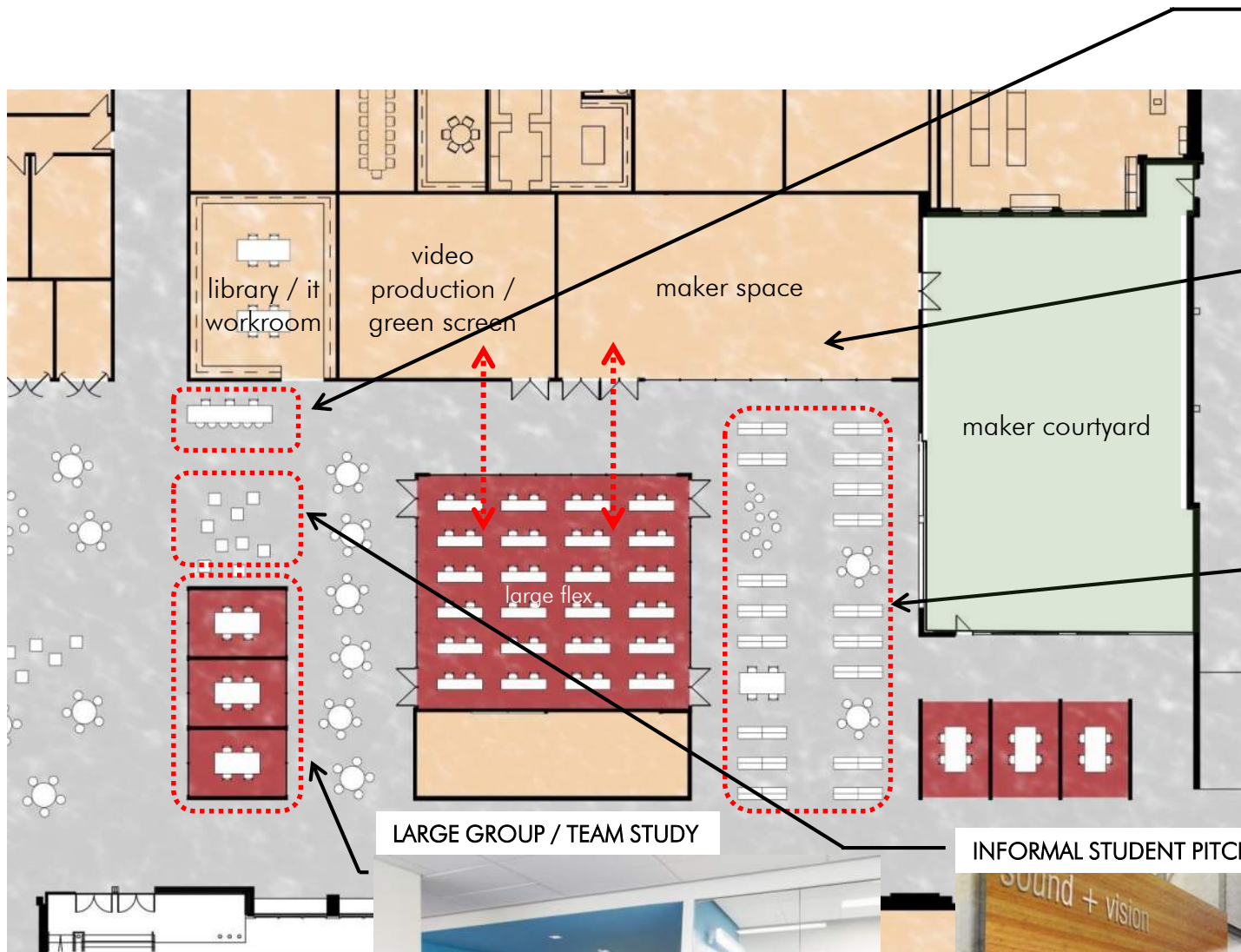




LHS – PROPOSED INNOVATION COMMONS







HELP DESK / GENIUS BAR  
SUPPORT TO TEACHERS AND STUDENTS FOR 1:1 INITIATIVE

MAKER SPACE / PRODUCT-BASED LEARNING CENTER



QUIET STUDY ZONE

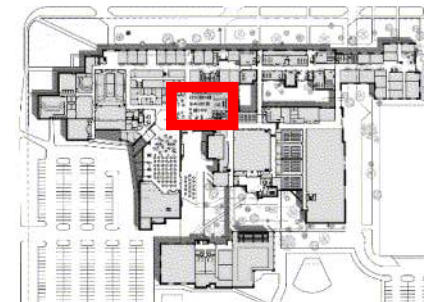


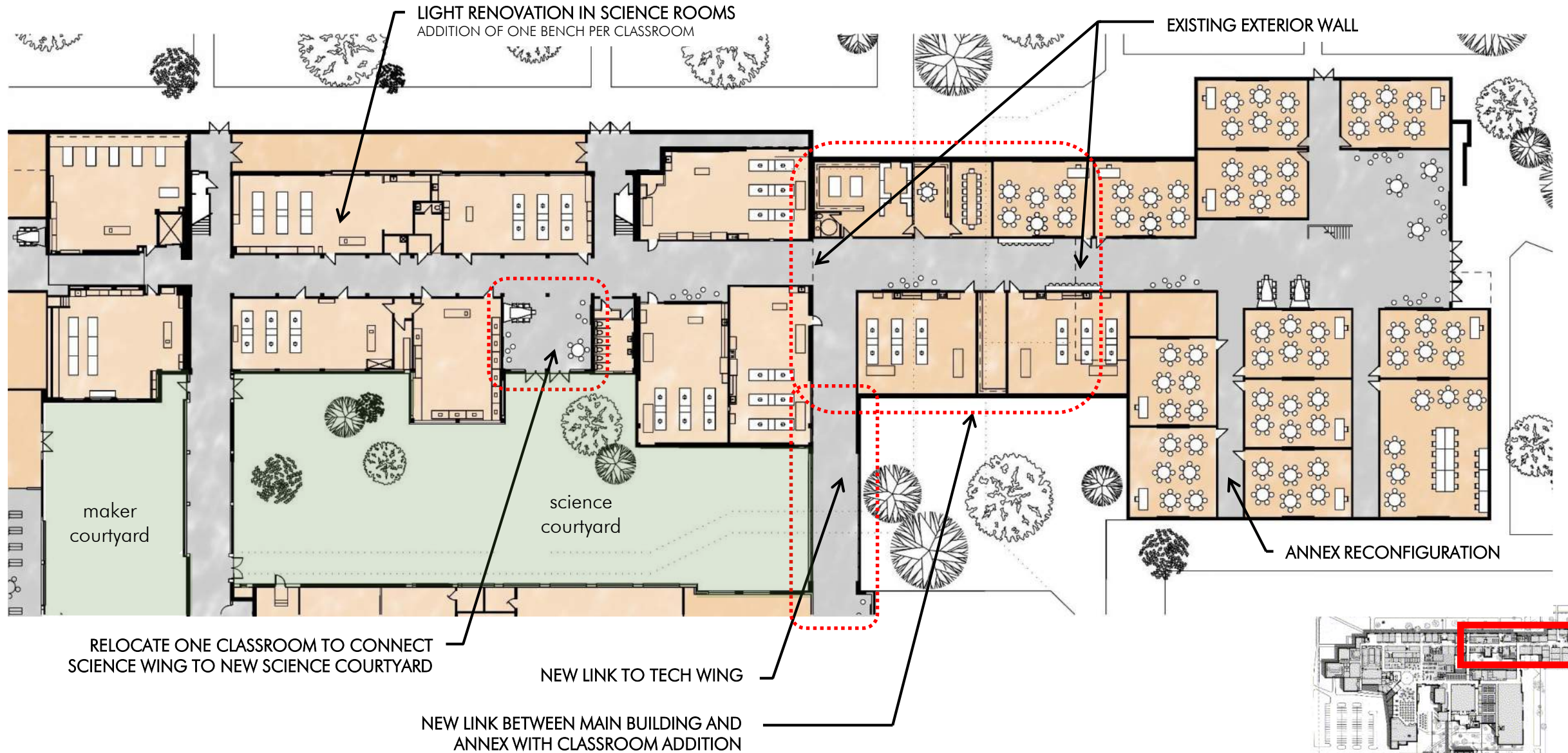
LARGE GROUP / TEAM STUDY

INFORMAL STUDENT PITCH SPACE

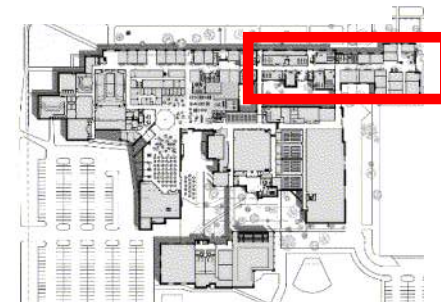


LHS – PROPOSED INNOVATION COMMONS

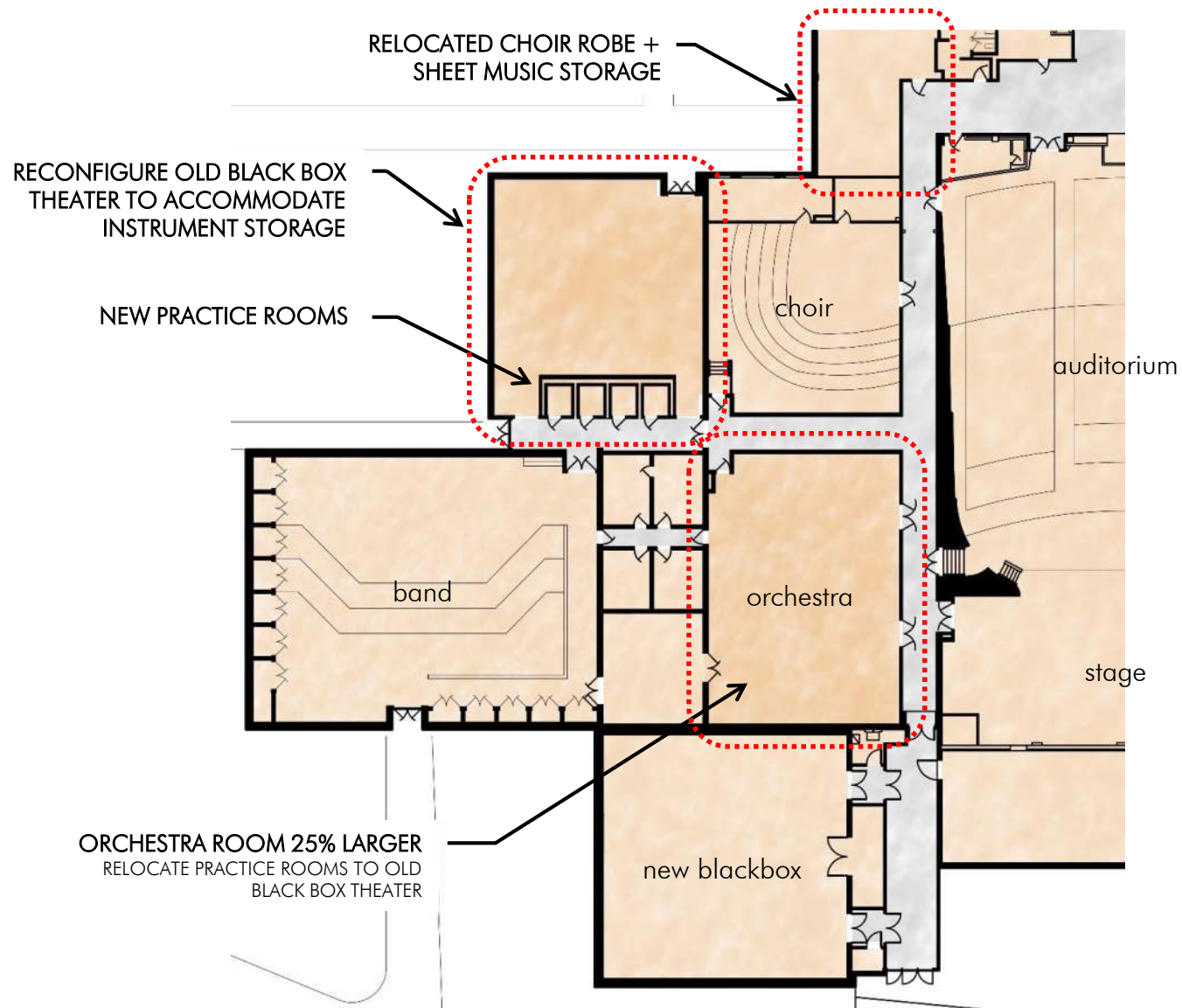




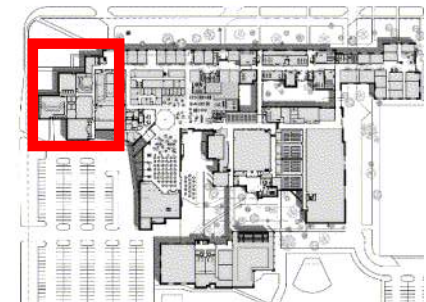
LHS – NEW CONNECTION TO ANNEX



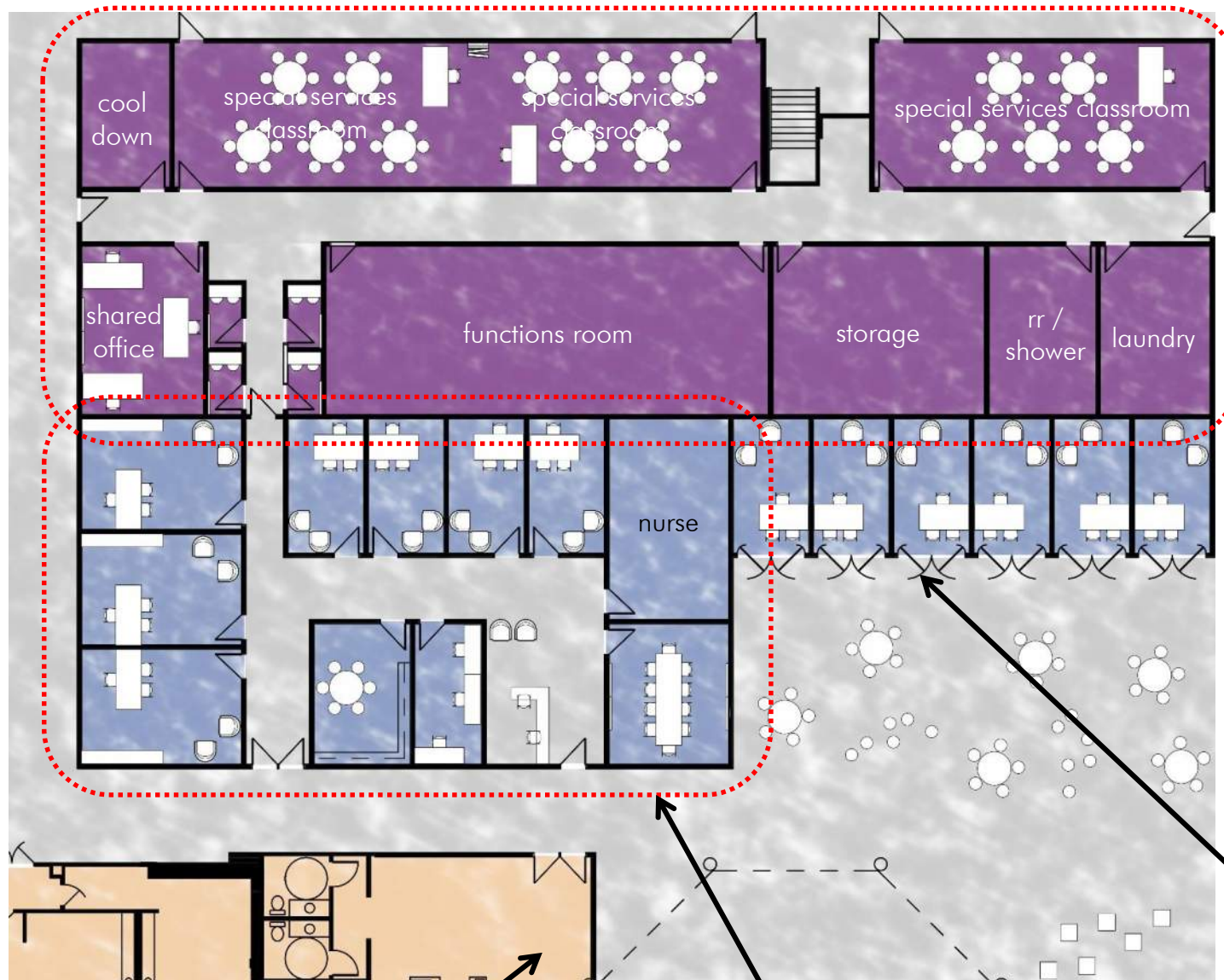




LHS Orchestra Room (existing)



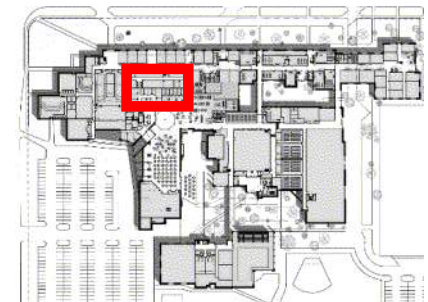




SPECIAL SERVICES SUITE WITH FLEXIBLE CLASSROOMS  
AND EASY CIRCULATION TO SPED SERVICES



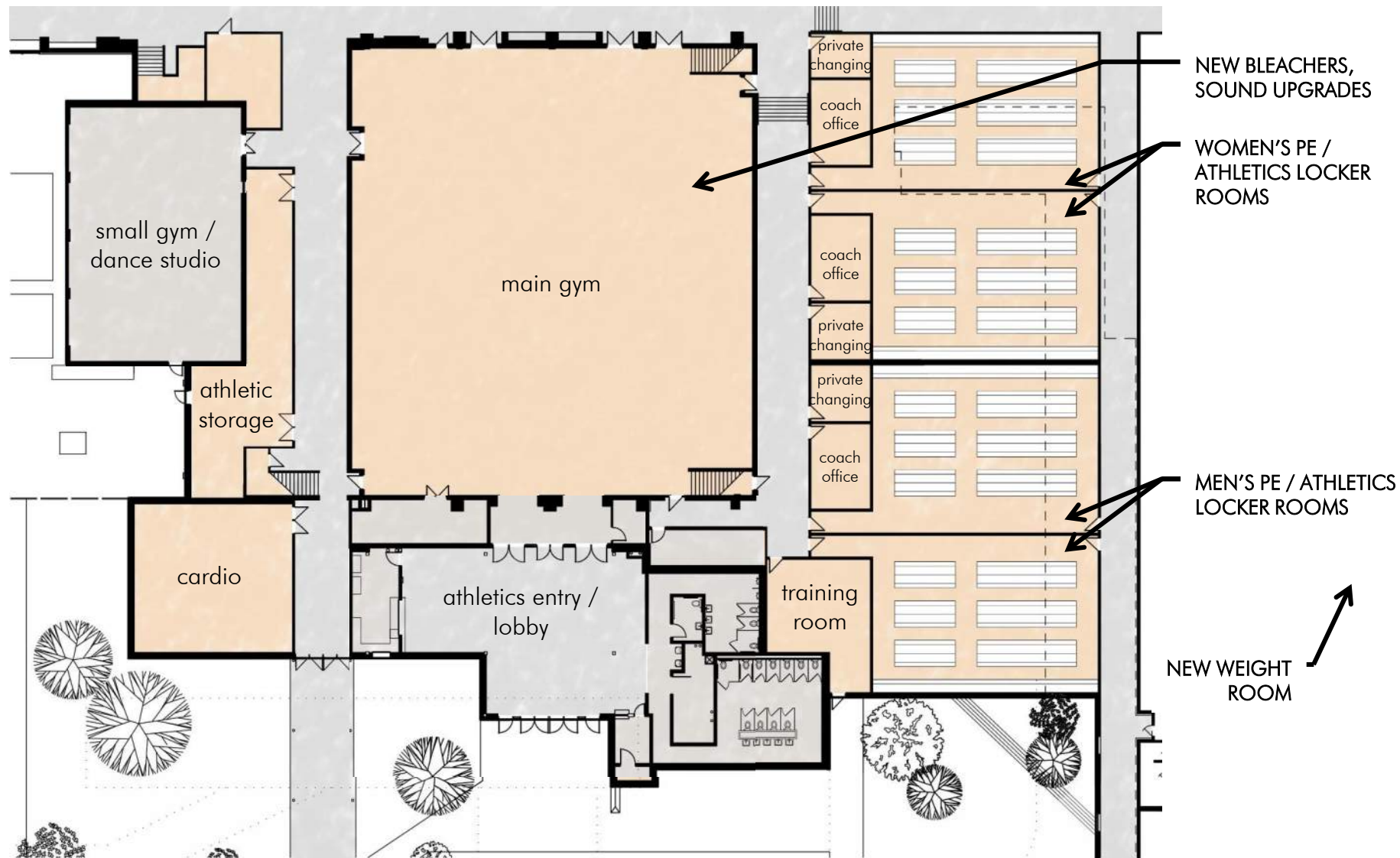
STUDENT SUCCESS CENTER  
OPEN TO STUDENTS  
3 SOCIAL WORKER OFFICES  
1 REGISTRAR OFFICE  
1 FINANCIAL OFFICE  
1 SECURITY RESOURCE OFFICER



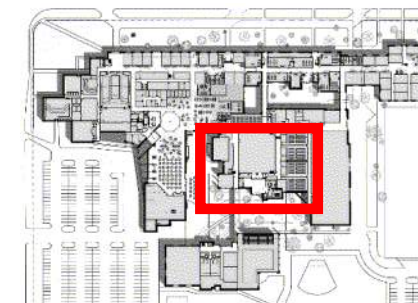
EXISTING FRONT ADMIN OFFICES

RELOCATED COUNSELOR AND  
ASSISTANT PRINCIPAL SUITE TO HAVE  
ADJACENCY TO MAIN  
ADMINISTRATIVE OFFICES

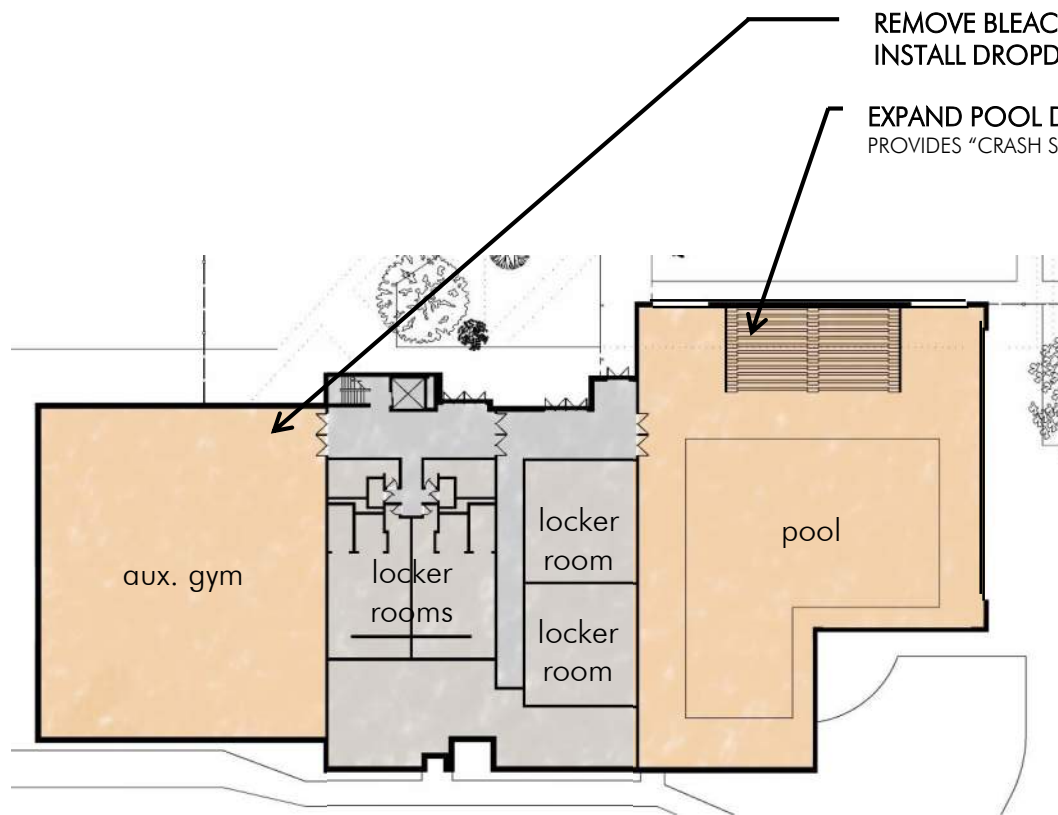
LHS – NEW LAYOUT FOR ADMIN SUPPORT / SPECIAL SERVICES



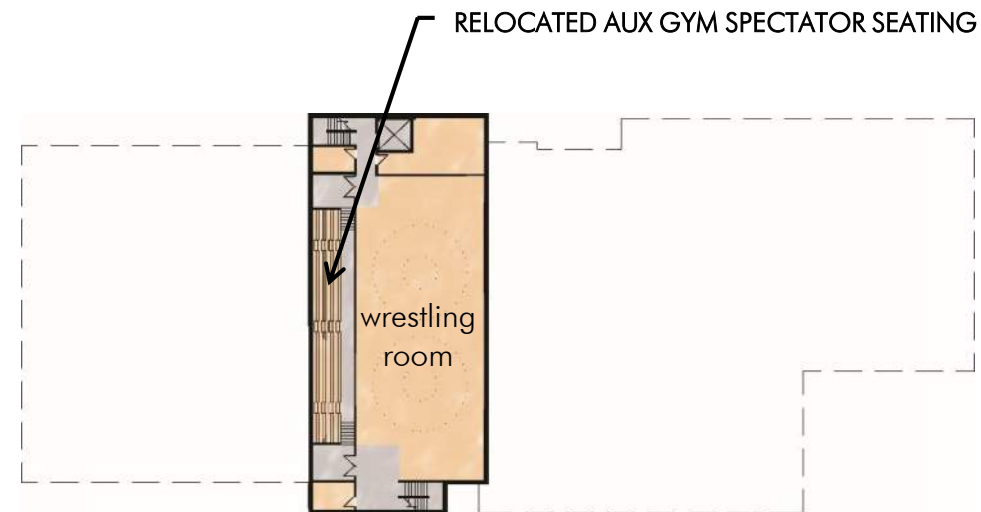
LHS Locker Rooms (existing)



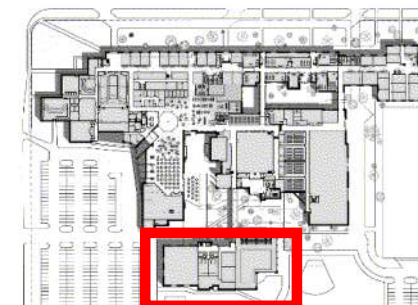




LEVEL ONE

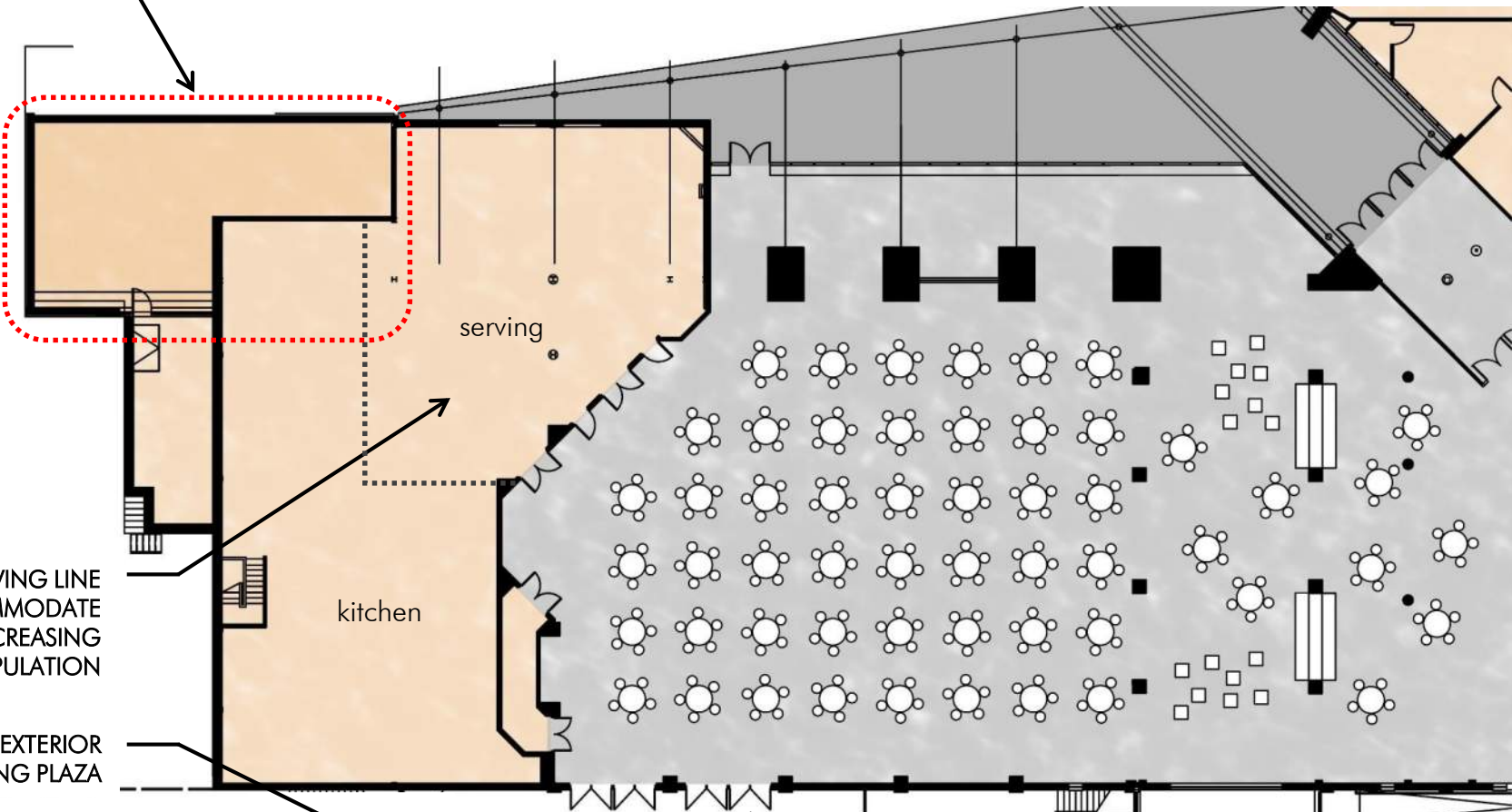


LEVEL TWO



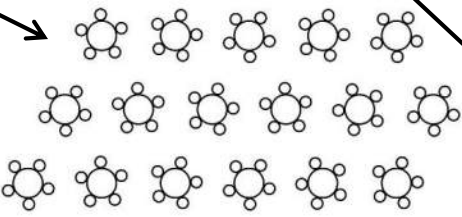


FOOD SERVICE ADDITION



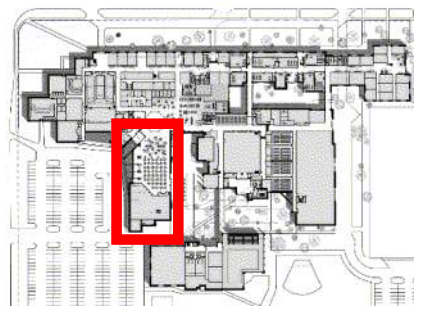
SECOND SERVING LINE  
ADDED TO ACCOMMODATE  
CURRENT AND INCREASING  
STUDENT POPULATION

NEW EXTERIOR  
DINING PLAZA



CONNECT CAFETERIA TO  
EXTERIOR DINING

LHS – RENOVATIONS / ADDITION TO KITCHEN / SERVING



NEW EXTERIOR DINING PLAZA

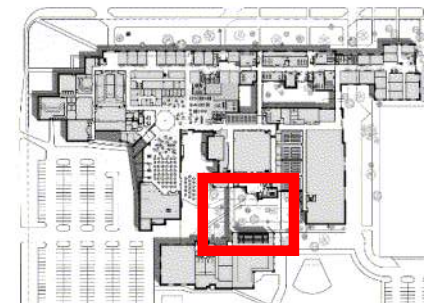
NEW TIERED AMPHITHEATER SEATING  
"OUTDOOR CLASSROOM"



NEW COVERED WALKWAY

PROPOSED FUTURE MULTIPURPOSE  
ACTIVITY / ATHLETIC SPACE  
STORM SHELTER TO ACCOMMODATE SCHOOL  
POPULATION

LHS – NEW OUTDOOR LEARNING COMMONS / COURTYARD



# SUMMARY



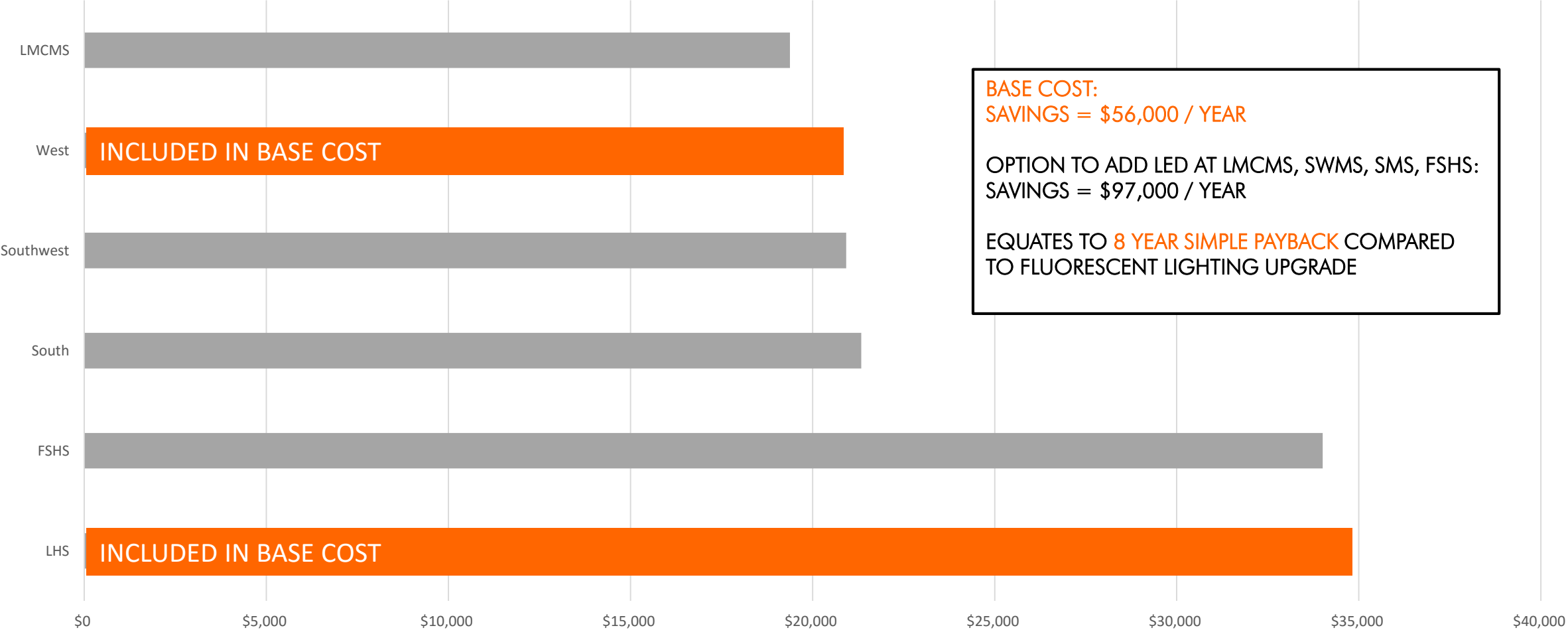
BASE COST	
Lawrence High School	\$47,626,151
Free State High School	\$11,729,981
Liberty Memorial Central Middle School	\$2,425,542
West Middle School	\$9,587,730
Southwest Middle School	\$2,573,613
South Middle School	\$426,452
Lawrence College and Career Center	\$625,000
Phasing/Temporary Classrooms	\$500,000
LEED / WELL BUILDING Certification	\$100,000
<b>TOTAL PROJECT COSTS</b>	<b>\$75,594,468</b>

\*project costs include new construction, renovation, priority 1 MEP, life safety upgrades, 50% of roof maintenance and repairs through 2020, 20% soft costs and 5% escalation

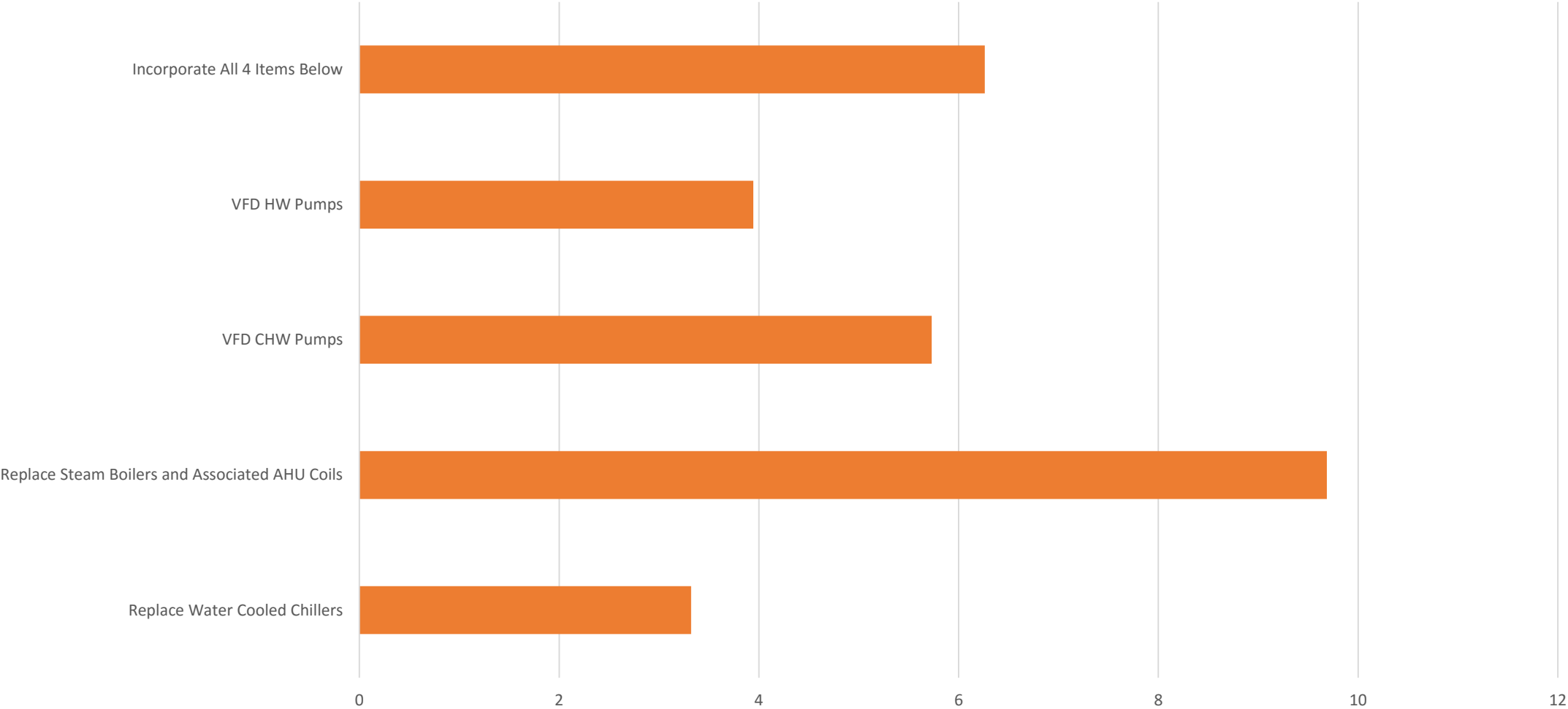
\*\* project costs exclude priority 2 and priority 3 MEP upgrades

ADDITIVE SCOPE / OPTIONS	
NOT INCLUDED WITHIN BASE NUMBERS	
Interior & Exterior Lighting Upgrades (FSHS, LMCMS, SWMS, SMS)	\$9,519,108
Remaining Priority 2 and 3 MEP Upgrades (LHS, FSHS, LMCMS)	\$1,747,570
Multi-use Athletics Space, constructed as storm shelters, 10,000 sf each (FSHS + LHS)	\$7,000,000
<b>SUBTOTAL PROJECT COSTS</b>	<b>\$18,266,678</b>

Annual Energy Cost Savings



Simple Payback (Years) for PRIORITY 2/3 MEP OPTION





gouldevans